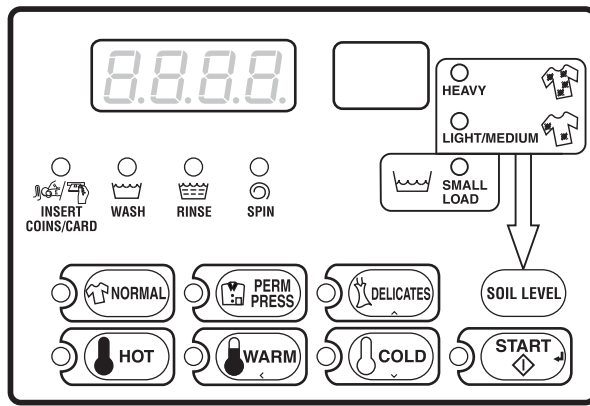


Topload Washer

Refer to Page 4 for Model Numbers



Keep These Instructions for Future Reference.

(If this machine changes ownership, this manual must accompany machine.)





WARNING

Failure to install, maintain, and/or operate this machine according to the manufacturer's instructions may result in conditions which can produce bodily injury and/or property damage.

W030

NOTE: The WARNING and IMPORTANT instructions appearing in this manual are not meant to cover all possible conditions and situations that may occur. It must be understood that common sense, caution, and carefulness are factors which cannot be built into these washers. These factors MUST BE supplied by the person(s) installing, maintaining, or operating the washer.

Always contact the distributor, service agent, or the manufacturer about any problems or conditions you do not understand.

Table of Contents

Model Identification	4
Preliminary Information	5
About the Control	5
Glossary of Terms.....	5
Power Failure Recovery	5
Communications	5
Control Identification	6
Select Cycle Pads.....	6
Select Wash Temp Pads.....	6
Display Identification	7
Light Emitting Diodes (LEDs)	7
Washer Operation	8
Start Up.....	8
Ready Mode.....	8
Cycle Sequence.....	8
Opening the Washer Lid.....	8
Signals.....	9
Changing Cycles.....	9
Special Features	10
Programming Control	10
Collecting Audit Information	10
Testing Machine and Control Functions.....	10
Rapid Advance Feature.....	10
Clearing the Vend Feature	10
Communications Mode.....	10
Coin Drop	10
Start Pulse Operation	11
Service Door and Coin Vault Openings	11
Special Vend.....	11
OPL Mode	11
Drop-Off Mode	11
Low Power/Auto-Shutdown Option	11
Opening the Service Door	12
Coin Models.....	12
Card Reader Models	12
Entering the Manual Mode	13
How to Enter the Manual Mode	13
Programming Control	15
What Can Be Programmed?	15
Programmable Options Available.....	15
1. Vend Price #1 “AtS1”	24
2. Coin #1 Value “dEn1”	25
3. Coin #2 Value “dEn2”	26
4. Start Pulse Value “PLSE”	27
5. Start Pulse Mode “PLSn”	28
6. Available Type “AtyP”	29
7. Default Cycle “dCYC”	30

© Copyright 2014, Alliance Laundry Systems LLC

All rights reserved. No part of the contents of this book may be reproduced or transmitted in any form or by any means without the expressed written consent of the publisher.

8. OPL Mode Enable/Disable “oPL”	31
9. Audio Signal “Aud”	32
10. Card Reader Display Control “CArd”	34
11. Error Code Programming “Err-”	35
12. Vend Price #2 “AtS2”	36
13. Vend Price #3 “AtS3”	37
14. Vend Price #4 “AtS4”	38
15. Vend Price #5 “AtS5”	39
16. Vend Price #6 “AtS6”	40
17. Vend Price #7 “AtS7”	41
18. Vend Price #8 “AtS8”	42
19. Vend Price #9 “AtS9”	43
20. Set Real-Time Clock “rtC-”	44
21. Special Vend A Data “SPA-”	45
22. Special Vend B Days Enable “SPb-”	65
23. Special Vend C Days Enable “SPC-”	66
24. Special Vend D Days Enable “SPd-”	67
25. Cycle Modifier Programming “CnP-”	68
26. Cycle Programming “CP--”	72
27. Drop Off Mode (On/Off) “droP”	77
28. Low Power/Auto Shutdown A Days Enable “LPSA”	77
29. Low Power/Auto Shutdown B Days Enable “LPSb”	78
30. Low Power/Auto Shutdown C Days Enable “LPSC”	78
31. Low Power/Auto Shutdown D Days Enable “LPSd”	79
32. Power Fail Reset “PFr”	79
33. IR Access (On/Off) “IrA”	81
34. Manual Rapid Advance (On/Off) “rAEn”	81
35. Manual Diagnostics (On/Off) “dAEn”	82
36. Production Test Cycle (On/Off) “PtEn”	82
Collecting Audit Information	83
Manual Reset	84
Testing Machine and Electronic Control Functions	85
Diagnostic Test Descriptions	87
Production Test Cycle	90
Error Codes	92
Rapid Advance Feature	94
Clear Vend Feature	95
Power Fail Recovery	96
Power Fail Reset Disabled	96
Power Fail Reset Enabled	96
Communications Mode	97
Infra-red Communications	97
Card Reader Communications (Card Models Only)	97
Network Communications	97
Default Cycle Time	98

Model Identification

Information in this manual is applicable to these washer models:

HWNLE2AP112CW01	SWNLC2AP112TW02	SWNLX1SP542NW23	SWNLY2HP112TW01
HWNLE2HP112CW01	SWNLC2HP112TW01	SWNLX2AP112TW02	SWNLY2PP112TW01
HWNLE2SP112CW01	SWNLC2HP112TW02	SWNLX2HP112TW01	SWNLY2SP112TW01
HWNLX2SP112CW01	SWNLC2PP112TW01	SWNLX2HP112TW02	SWNLY2SP302NW22
HWNLX1SP122DW01	SWNLC2PP112TW02	SWNLX2PP112TW02	SWNLY2AP112TW11
HWNLX2HP112CW01	SWNLC2SP112TQ01	SWNLX2SP112TW01	SWNLY2HP112TW11
HWNLY2HP112CW01	SWNLC2SP112TW01	SWNLX2SP112TW02	
HWNLY2SP112CW01	SWNLC2SP112TW02	SWNLX2SP302AW01	
SWNLC2AP112TW01	SWNLX1SP122DW01	SWNLY2AP112TW01	

Preliminary Information

About the Control

This control is an advanced, programmable computer that lets the owner control machine features by pressing a sequence of SELECT CYCLE and SELECT WASH TEMP pads. Refer to *Figure 1*.

The control allows the owner to program custom cycles, set vend prices, retrieve audit information, run diagnostic tests, program special vend features and other programmable features. Refer to ***Programming Control*** for a list of features. Washers shipped from the factory have a default cycle and wash temperature setting of PERM PRESS, WARM built in. However, the owner can change the default cycle, or any cycle, as needs permit.

IMPORTANT: In the event of a power failure, the control will not have to be reprogrammed. It is designed with a memory system that will remember how it was programmed (for up to 10 years) until the electrical power is restored.

IMPORTANT: It is extremely important that the washer has a positive ground and that all mechanical and electrical connections to the control are made before applying power to or operating the washer.

Glossary of Terms

The following are a few terms and abbreviations to learn. These are referred to throughout the instructions.

Display - This term refers to the window area of the control that displays words and values.

LED (Light Emitting Diode) - This term refers to the lights next to the keypads and status words of the control.

Power Failure Recovery

If a cycle is in progress and the power fails, the cycle status is saved in memory. When the power recovers, the washer will resume into the previously active cycle if so programmed by the owner. If the power failure occurs while the control is in a fatal error mode, it will return to Ready Mode upon recovery.

The owner may program a special feature called POWER FAIL RESET which sets a maximum power failure duration. To program this feature, refer to ***Programming Control, option 32***.

If the length of the power failure is greater than the POWER FAIL RESET time, the control will end the cycle and the display will revert back to the Ready Mode. If the washtub is full of water, the control will move to the Delicate Rinse Spin cycle and prompt the user to press the START pad. Once the START pad is pressed, the control will spin out the cycle.

Communications

The control may be programmed manually, by infra-red with an external device or by the network. A limited number of features can be programmed by a card reader.

Infra-red Communications (Optional)

An external device, such as a PDA, allows the owner to program and retrieve information from the control without touching the keypad. An external device greatly expands the programming options available to the owner. However, the external device is not required to program and operate the washer. The operation of an external device and the advanced features available are covered separately in the instructions included with the external device software. Contact Alliance Laundry Systems for a list of approved PDAs and other external devices.

Serial Card Reader Communications (Card Models Only)

The control will accept communication with a serial card reader in order to perform vending transactions when a card is inserted to pay for cycles. The card reader can also allow the owner to program and collect audit information.

For detailed information on serial card reader communications, refer to instructions included with card reader.

Network Communications

The control will also accept communication with a network interface board which allows the control to be linked to a personal computer. This network link allows an owner to program, collect data and run diagnostics on any machine.

For detailed information on network communications, refer to the network instructions.

Control Identification

Select Cycle Pads (Refer to Figure 1)

SELECT CYCLE pads are used to select the specific washer cycle. These pads include NORMAL, PERM PRESS, and DELICATES. These pads allow the user to select a cycle other than the default cycle (PERM PRESS). The SELECT CYCLE keypads are not active after the first fill has been completed. The selected cycle is indicated by the light (LED) on the pad. Pressing the flashing START pad will confirm the selection and the cycle will begin.

The SOIL LEVEL pad is used to select a cycle modifier including SMALL LOAD, LIGHT/MEDIUM and HEAVY. The selected option is indicated by the light (LED) next to the selection.

Select Wash Temp Pads (Refer to Figure 1)

SELECT WASH TEMP pads are used to select the temperature of the water used for the wash fill. These pads include HOT, WARM, and COLD. These pads allow the user to select a water temperature other than the default setting (WARM). The SELECT WASH TEMP pads are active only during the first fill of the cycle. The selected temperature is indicated by the light (LED) on the pad.

The SELECT WASH TEMP pads also affect the rinse fill temperature if HOT or WARM is selected and either the Warm Rinse option is enabled, or the HEAVY cycle modifier Warm Rinse option is enabled.

Both the SELECT WASH TEMP pads and the SELECT CYCLE pads are used in various combinations for programming cycles, retrieving audit information, running diagnostic tests, and other operations. These operations are covered throughout this manual and cover the manual programming and data retrieval options.

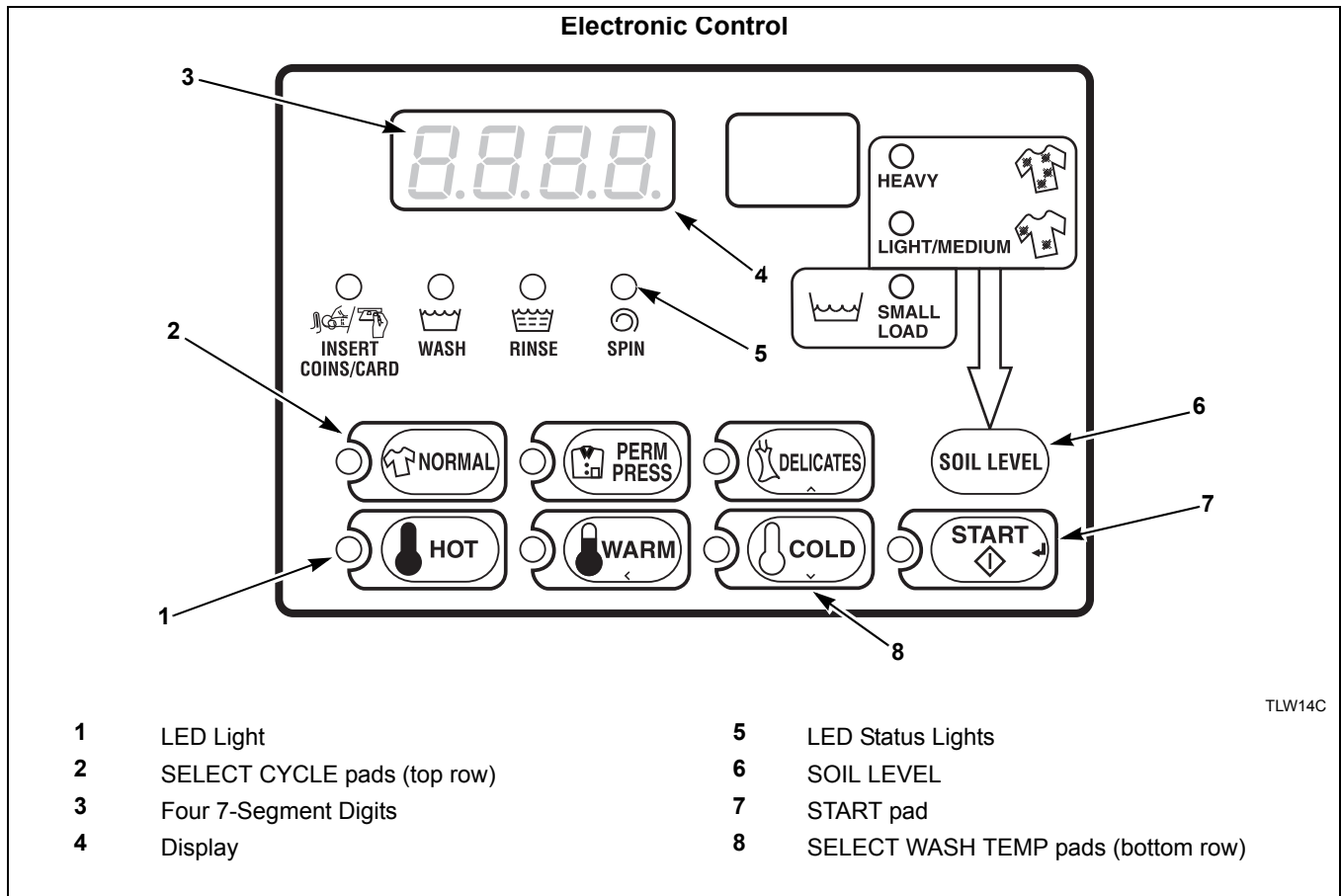


Figure 1

Display Identification

Light Emitting Diodes (LEDs) (Refer to *Figure 1*)

LIGHT EMITTING DIODES (LEDs) are used to indicate the chosen cycle, wash temperature and cycle status. See below for information on each LED.

CYCLE LED (NORMAL, PERM PRESS or DELICATES)

CYCLE LED will remain lit the entire cycle.

WASH TEMP LED (HOT, WARM or COLD)

WASH TEMP LED will remain on until the end of the cycle or will change to a rinse temperature if programmed to do so.

WASH LED

WASH LED is lit at the beginning of the wash portion of the cycle and will remain lit until the wash is complete.

RINSE LED

RINSE LED is lit at the beginning of the Rinse or Extra Rinse portion of the cycle and will remain lit until the rinse is complete.

SPIN LED

SPIN LED is lit during the final spin portion of the cycle.

INSERT COINS/CARD LED

INSERT COINS/CARD LED prompts the user for coins or a card to satisfy the vend price. Four digits show the vend price remaining to be satisfied. The vend price displayed will decrease with each coin inserted. If new options are selected during the first fill of the wash cycle and it requires additional vend, the *INSERT COINS/CARD* light will flash one (1) second on and one (1) second off, and the display will show the vend price remaining to be satisfied.

SMALL LOAD LED

SMALL LOAD is lit if selected for the current cycle. The small load pressure switch will be used as the fill level.

LIGHT/MEDIUM LED

LIGHT/MEDIUM is lit if selected for the current cycle. The normal load pressure switch will be used as the fill level.

HEAVY LED

HEAVY is lit if selected for the current cycle.

Four 7-Segment Digits

The 7-SEGMENT DIGITS are used to display the time remaining in a cycle, vend price, error messages and descriptive codes. During diagnostic testing or manual programming of the control, these digits will display descriptive codes and values (as described in *Entering the Manual Mode*).

Washer Operation

Start Up

When power is applied to the washer, the control will display its software version as “S XX” (“XX” is the version number) for one second. The control will enter different Modes depending on the Mode it was in at power down.

Ready Mode

To start the cycle, the user must press the START keypad.

The user will be able to select a different cycle or wash water temperature by pressing a cycle pad when the machine is in the Ready Mode or in the first fill cycle. (If certain types of card readers are connected to the machine, the cycle can't be changed after START is pressed.) If not enough vend is entered to satisfy the vend price, the control will display the remaining vend price needed to start the cycle. If the first fill was interrupted to change temperature or cycle type that requires more money, and the vend price is not satisfied within 1 minute, the washer control will go back to the first selection and the cycle will continue. After the first fill, all key presses will be ignored, allowing the washer to go through the complete cycle.

When a cycle is complete, the control will display “00” until the lid is opened, a key is pressed, or a coin/card is entered. When one of these three options occur, the display will revert back to the Ready Mode.

Cycle Sequence

Upon the start of a cycle, the control will display the total cycle time. The appropriate LEDs will light while the machine passes through different cycle steps. Any coin entered after the first fill step will be added to the total coin counter, but the user will not be able to change cycles or water temperature. If coins are entered in the last three minutes of a cycle, the current cycle will end and the control will enter the Partial Vend Mode.

Opening the Washer Lid

If the washer lid is opened anytime except the last three minutes of a cycle, the display will show “LId” and the timer will stop. Once the lid is closed, the cycle will restart from the point of interruption. If the lid is opened in the final three minutes of the final spin step, the timer will continue to count down to the end of the cycle. The cycle operation will stop and the display will show “LId”. When the timer reaches 0 minutes, the control will display “00” until a key is pressed, or a coin/card is entered. When one of these options occur, the display will revert to the Ready Mode.

Signals

There are five options when a signal can be used during the washer operation. These five options are listed below:

1. **End of Cycle Signal**
By default, this signal is turned off. If turned on, the signal sounds for three (3) seconds at the end of a cycle.
2. **Signal On Keypad Depression**
By default, this signal is turned on and sounds for a quarter of a second each time a keypad is pressed.
3. **Signal On Coin Drop/Card Insertion**
By default, this signal is turned on and will sound for a quarter of a second each time a coin or card is entered.
4. **Signal for Card Removal (Card Models Only)**
By default, this signal is turned on and will sound one second on and one second off when the control is prompting for card removal.
5. **Signal for Start**
By default, this signal is turned on and will sound one second on and one second off for 10 seconds after vend price has been satisfied.

NOTE: Refer to *Programming Control* to program signal options.

Changing Cycles

Cycles and wash temperatures can be changed anytime during the first fill step. (If certain types of card readers are connected to the machine, the cycle can't be changed after START is pressed.) After the first fill step, all key presses are ignored.

Selecting a higher priced wash temperature or cycle type will stop the first fill cycle, and *INSERT COINS/CARD* will flash one (1) second on and one (1) second off until the vend price has been satisfied. After the vend price has been satisfied, the cycle will restart with the new selection. If the vend price is not satisfied within 1 minute, the washer control will go back to the previously set wash temperature and cycle selection.

Special Features

Programming Control

The control allows the washer owner to program the control with the use of the keypad. Audit, diagnostic, cycle and vend information may be programmed and retrieved by pressing combinations of the Select Cycle and Select Wash Temp pads.

For details on programming cycle and vend information, refer to *Programming Control*.

Collecting Audit Information

The control will store audit information in its memory that can be retrieved by pressing various combinations of Select Cycle and Select Wash Temp pads. The control will record coins entered, total machine cycles, and total start pulses.

For more information on the audit features, refer to *Collecting Audit Information*.

NOTE: Additional audit information is retrievable with an external device, a card reader or a network. Refer to the appropriate instruction manual.

Testing Machine and Control Functions

Special programmable diagnostic features built into the control allow the owner to run specific diagnostic tests. By opening and closing the service door and then pressing various sequences of Select Cycle and Select Wash Temp pads, the owner may perform the following tests:

- Control Software Version Number
- Service Door Opening Test
- Coin Vault Opening Test
- Coin Drop #1 Input Test
- Coin Drop #2 Input Test
- Lid Switch Input Test
- Pressure Switch Tests
- Show Fill Time Test
- Show Drain Time Test
- Start Pulse Test
- Configuration Display Tests
- Coin Drop Header Present Test

For detailed information on running diagnostic tests, refer to *Testing Machine and Electronic Control Functions*.

Rapid Advance Feature

This feature allows the user to quickly advance through active cycles or advance into a cycle from the Ready Mode. This feature is useful when tests must be performed immediately on a washer currently in an active cycle. In this case, the user can quickly advance through the cycles to the Ready Mode. At this point, the user can perform the required tests and then return the washer to the point it was interrupted.

For detailed information on using the Rapid Advance feature, refer to *Rapid Advance Feature*.

Clearing the Vend Feature

This feature allows the user to return the control back to the Ready Mode if coins have been entered but the full vend price has not yet been satisfied.

For more information on using the Clear Vend feature, refer to *Clear Vend Feature*.

Communications Mode

This feature allows the washer control to communicate with an external device, a card reader or a network. This allows the washer control to be programmed and have its data read without using the keypad.

For more detailed information on using the Communications Mode feature, refer to *Communications Mode*.

Coin Drop

The control will accept pulses from a single or dual coin drop to satisfy vend price. Each coin drop will have the ability to start or run a cycle.

Start Pulse Operation

The control will accept pulses from optional payment systems. The machine can be programmed to receive a single start pulse or multiple start pulses, or the Start Pulse Option can be turned off. The Start Pulse Mode allows the machine to go from the Ready Mode to the Start Mode after single or multiple pulses are received.

Service Door and Coin Vault Openings

The control will capture the times and dates of the openings of the Coin Vault and the Service Door. The information is saved in memory. An open service door combined with various keypad presses allows the control to enter manual modes of operation if the Break-In Alarm is not on. These modes include Manual Programming, Audit Collection and Diagnostics.

Special Vend

This feature allows the owner to program the control to allow programmable vend prices for specific hours and dates.

For details on programming Special Vend, refer to *Programming Control*.

OPL Mode

This feature allows the user to start a cycle without satisfying the vend price. While running a cycle in OPL Mode, pressing the START keypad advances to the next cycle step. Pressing the HOT and WARM keypads together will end the cycle.

For details on enabling OPL Mode, refer to *Programming Control*.

Drop-Off Mode

This feature allows the owner to limit machine use to an attendant without requiring vend. Starting the machine will require the correct sequence of four keypad presses as programmed by an external device, a card reader or a network. While running a cycle in Drop-Off Mode, pressing the START keypad advances to the next cycle step. Pressing the HOT and WARM keys together will end the cycle.

For details on enabling Drop-Off Mode, refer to *Programming Control*.

Low Power/Auto-Shutdown Option

This feature allows the owner to program the control to shut down or enter a low power consumption mode based on programmable times and dates if either of these options are enabled.

For details on programming the Low Power/Auto-Shutdown option, refer to *Programming Control*.

Opening the Service Door


Coin Models

Manually programming the control requires the user to open and close the service door. After opening and closing the service door, access to various programming options, diagnostics and audit capabilities is allowed for 4.25 minutes.

The service door is located on the top of the meter case. Refer to *Figure 2*.

Card Reader Models

Manually programming the control requires the user to remove the control panel and unplug the bullet connector located between the “white/black” and “red/blue” wires. This will allow the user to access various programming options, diagnostics and audit capabilities. The control panel is located on the control hood. Refer to *Figure 2*.

	WARNING
Any disassembly requiring the use of tools must be performed by a suitably qualified service person.	
<small>W299</small>	

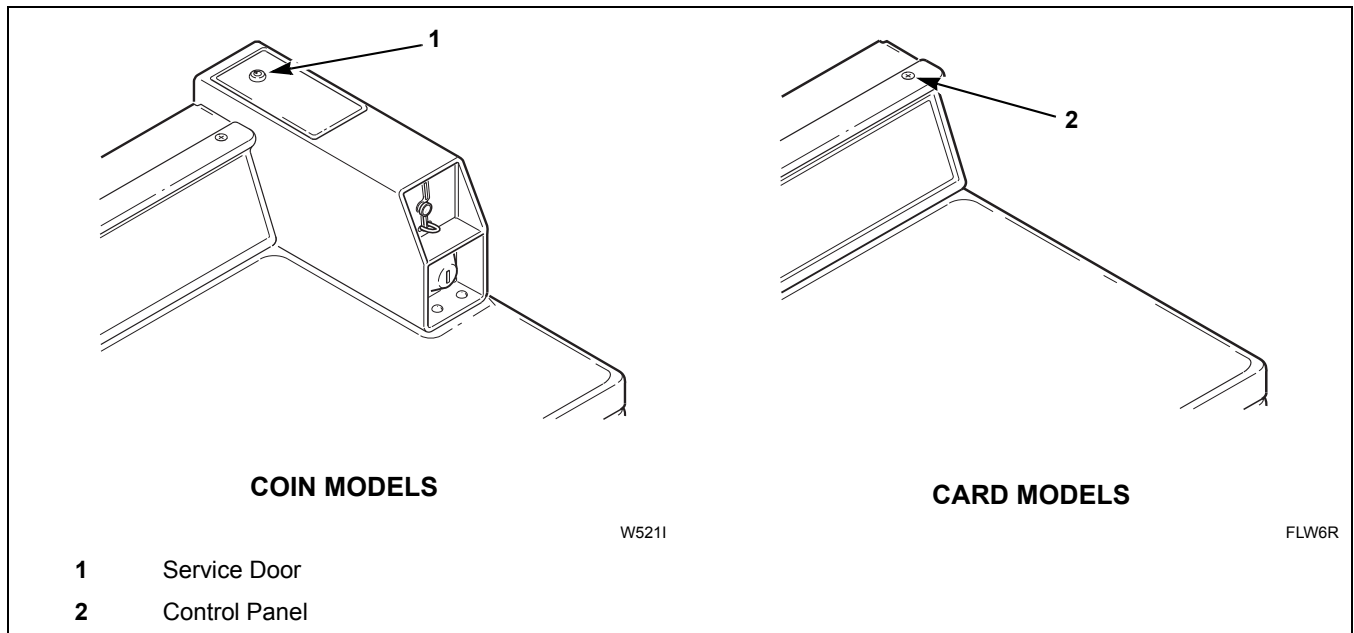


Figure 2

Entering the Manual Mode

For programming, testing, and retrieving information from the control, it is often necessary to enter the Manual Mode by following the four simple steps below.

For an overview of entering the Manual Mode, refer to the flowchart on the following page.

How to Enter the Manual Mode

1. If accessing Diagnostic Tests, be sure the washer is in the Ready Mode before continuing to step 2. If the washer is in an active cycle, rapid advance through the cycle. Refer to **Rapid Advance Feature**. If coins or a card has been entered, refer to **Clear Vend Feature**.
2. Open the service door. Refer to **Opening the Service Door**.

NOTE: The coin vault switch must be closed to enter the Manual Mode.

3. While pressing and holding the NORMAL keypad with one hand, press the HOT keypad with the other hand.
4. The display will show “rAPd”.
5. Press the DELICATES (^) or the COLD (v) keypad to scroll through the options until the desired option appears in the display.
6. Press the START (enter) keypad.

NOTE: After entering Manual Mode, if no keypads are pressed for 4.25 minutes, the control will return to the previous mode of operation. If entering Manual Mode while the washer is in an active cycle, the machine will continue to run.

7. To exit, press the WARM (<) keypad. The control will revert back to Ready Mode.

Manual Mode is broken into two groups: Manual Programming and Manual Rapid Advance/Diagnostics. Manual Programming can only be turned on or off with an external device or a network. Refer to the appropriate instruction manual. Manual Rapid Advance/Diagnostics can be turned on and off using an external device by manual programming (refer to *options 34 and 35 of Programming Control*), or with the network.

By default, both groups are turned “on”.

The manual features available in each group are as follows (the menu displayed on the display in this mode is in parenthesis).

Manual Programming

Manual Programming (Prog)

Manual Read Audit (AUdt)

Manual Reset (rSEt)

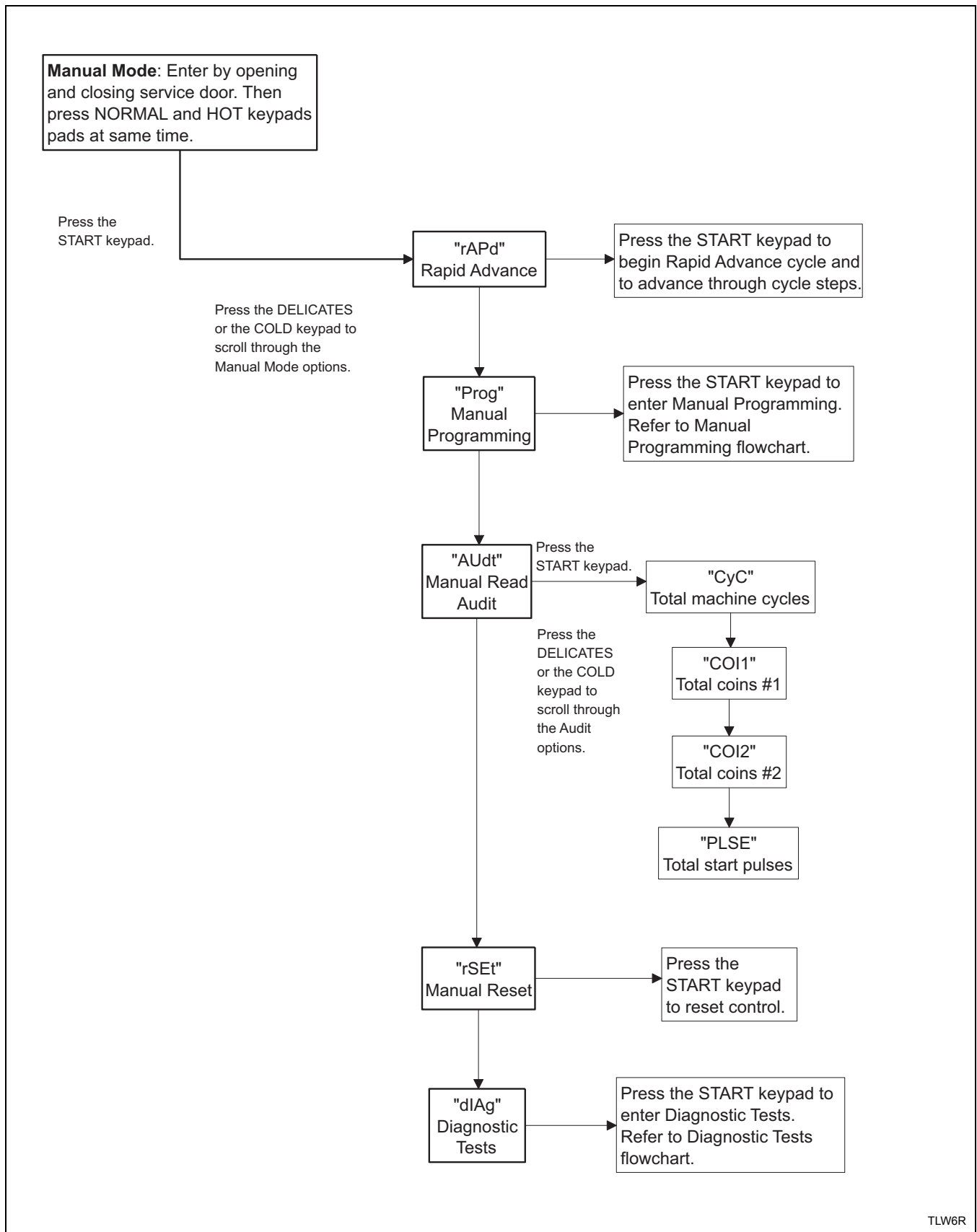
Rapid Advance/Diagnostics

Rapid Advance (rAPd)

Diagnostic Tests (diAg)

If a group is turned off, the display will change from the selected feature to “OFF”, an audio signal will sound for one second and the features in the group cannot be entered. The display will then return to the selected feature.

Entering the Manual Mode



Programming Control

What Can Be Programmed?

This feature allows the owner to program cycle parameters, standard vend pricing, special vends and other features by using the keypads. The control must have the Manual Programming Mode enabled, which is the factory default. This mode can only be turned OFF and ON by using an external device or a network. Refer to this section when programming the control.

This section offers a detailed description of all 36 options available to program.

Each description includes instructions on when and why the option might be used and, more importantly, how to program the option.

For an overview of the programming organization, refer to the flowcharts on the following pages.

For more advanced users, a quick reference list of the options available through the programming mode is located on this page.

NOTE: The letters and numbers in the Option Display column of the Programmable Options list are what will be shown in the display when that option is selected.

Programmable Options Available

Option Number	Option Display	Description	Factory Default	Value Range
1	“AtS1”	Vend Price #1	200	1-65,535
2	“dEn1”	Coin #1 Value	25	1-65,535
3	“dEn2”	Coin #2 Value	100	1-65,535
4	“PLSE”	Start Pulse Value	100	1-65,535
5	“PLSn”	Start Pulse Mode	128	oFF, 128, 192
6	“AtyP”	Available Type	0	0-7
7	“dCYC”	Default Cycle	5	1-9
8	“oPL”	OPL Mode Enable/Disable	oFF	on/oFF
9	“Aud”	Audio Signal	29	0-31
10	“CArd”	Card Reader Display Control	oFF	on/oFF
11	“Err-”	Errors	—	—
a	“CEr-”	Coin Error Parameters	—	—
1	“CEr1”	Coin Error	on	on/oFF
2	“CEr2”	Coin Error Penalty	oFF	on/oFF
3	“CEr3”	Coin Drops Header Present Error	on	on/oFF
b	“E FL”	Fill Error	—	—
1	“EFL1”	Fill Error (On/Off)	on	on/oFF
2	“EFL2”	Fill Error Time	30	5-90
c	“E dr”	Drain Error	on	on/oFF
12	“AtS2”	Vend Price #2	200	1-65,535
13	“AtS3”	Vend Price #3	200	1-65,535
14	“AtS4”	Vend Price #4	200	1-65,535
15	“AtS5”	Vend Price #5	200	1-65,535
16	“AtS6”	Vend Price #6	200	1-65,535

(continued)

Programming Control

(continued)

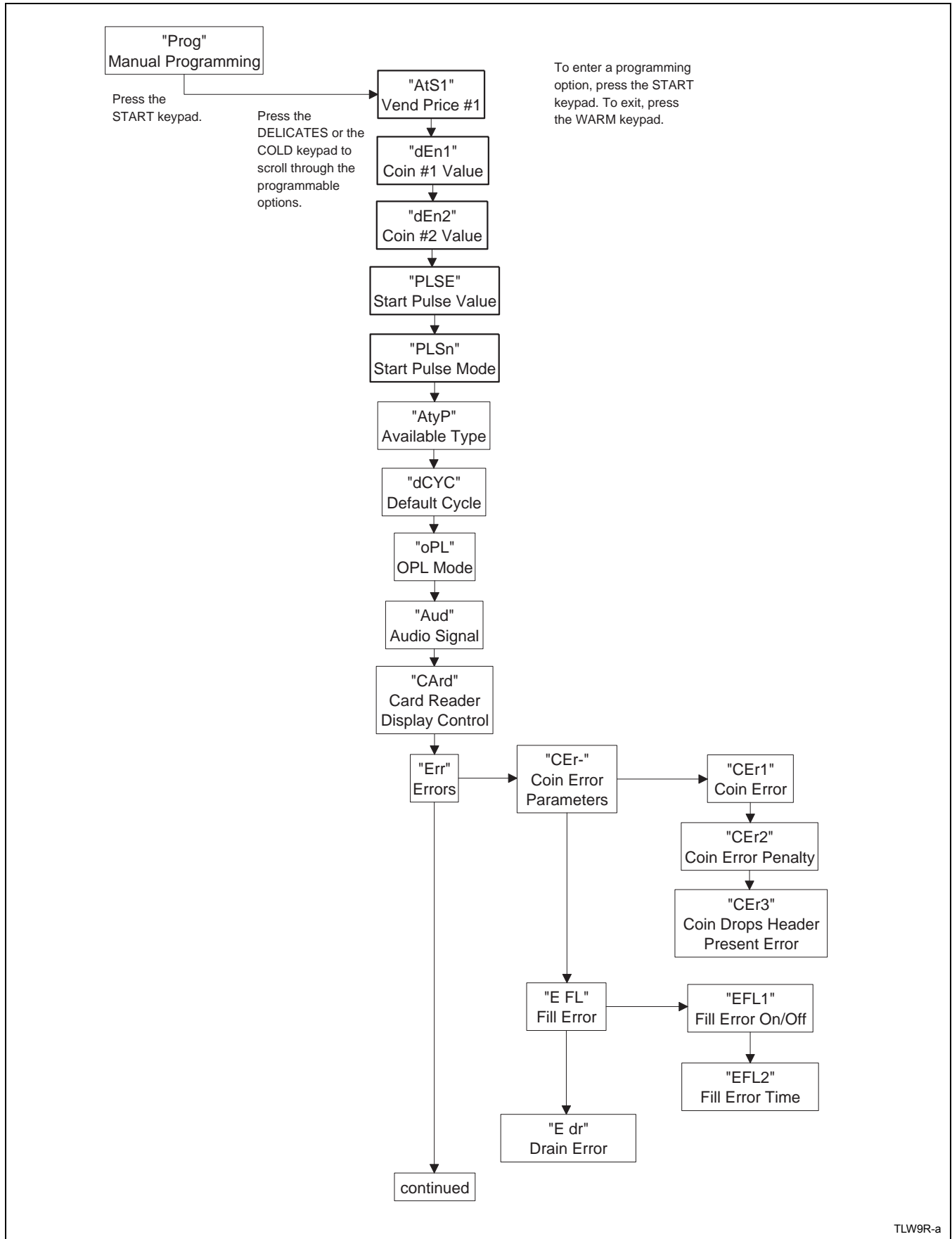
Option Number	Option Display	Description	Factory Default	Value Range
17	“AtS7”	Vend Price #7	200	1-65,535
18	“AtS8”	Vend Price #8	200	1-65,535
19	“AtS9”	Vend Price #9	200	1-65,535
20	“rtC-”	Real Time Clock	—	—
a	“rtC1”	Minutes	—	0-59
b	“rtC2”	Hours	—	0-23
c	“rtC3”	Day of Week	—	1-7
d	“rtC4”	Date of Month	—	1-31
e	“rtC5”	Month	—	1-12
f	“rtC6”	Year	—	0-99
g	“rtC7”	Daylight Saving (On/Off)	on	on/oFF
21	“SPA-”	Special Vend A data	—	—
a	“SA01”	Special Vend A Days Enable (On/Off)	oFF	Refer to Table 7
b	“SA02”	Special Vend A Start Hour	0	0-23
c	“SA03”	Special Vend A Start Minute	0	0-59
d	“SA04”	Special Vend A Length in Hours	0	0-24
e	“SA05”	Special Vend A Start Month	0	0-12
f	“SA06”	Special Vend A Start Date	0	0-31
g	“SA07”	Special Vend A Start Year	0	0-99
h	“SA08”	Special Vend A End Month	0	0-12
i	“SA09”	Special Vend A End Date	0	0-31
j	“SA10”	Special Vend A End Year	0	0-99
k	“SA11”	Special Vend A Price #1	0	0-65,535
l	“SA12”	Special Vend A Price #2	0	0-65,535
m	“SA13”	Special Vend A Price #3	0	0-65,535
n	“SA14”	Special Vend A Price #4	0	0-65,535
o	“SA15”	Special Vend A Price #5	0	0-65,535
p	“SA16”	Special Vend A Price #6	0	0-65,535
q	“SA17”	Special Vend A Price #7	0	0-65,535
r	“SA18”	Special Vend A Price #8	0	0-65,535
s	“SA19”	Special Vend A Price #9	0	0-65,535
t	“SA20”	Special Vend A Added Wash Agitate Time	0	0-10
u	“SA21”	Special Vend A Subtracted Wash Agitate Time	0	0-10
22	“SPb-”	Special Vend B Days Enable (On/Off)	oFF	on/oFF
23	“SPC-”	Special Vend C Days Enable (On/Off)	oFF	on/oFF
24	“SPd-”	Special Vend D Days Enable (On/Off)	oFF	on/oFF
25	“CnP-”	Cycle Modifier Programming	—	—
a	“CnP1”	Heavy Cycle Selection Vend Price	25	1-65,535

(continued)

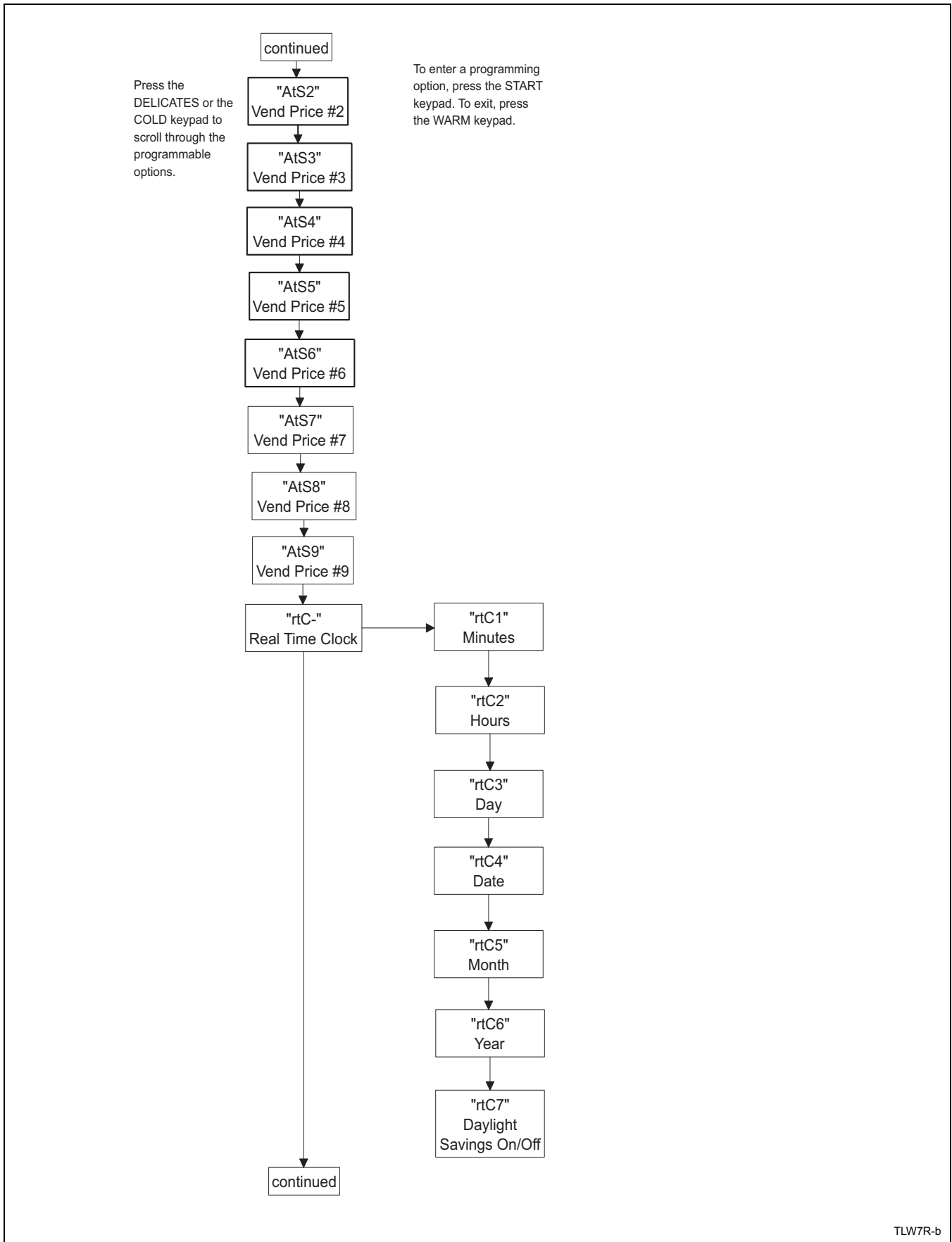
(continued)

Option Number	Option Display	Description	Factory Default	Value Range
b	“CnP2”	Heavy Cycle Selection Option (Enabled/Disabled)	on	on/oFF
c	“CnP3”	Heavy Cycle Selection Ex. Wash Time (0-10 Min.)	2	0-10
d	“CnP4”	Heavy Cycle Selection Ex. Rinse Time (0-10 Min.)	0	0-10
e	“CnP5”	Heavy Cycle Selection Warm Rinse Option	oFF	on/oFF
f	“CnP6”	Default Cycle Modifier	1	0-2
26	“CP--”	Cycle Programming	—	—
a	“CP1”	Normal WASH Agitate Time	10	0-10
b	“CP2”	Normal EXTRA RINSE Agitate Time	0	0-10
c	“CP4”	Normal FINAL SPIN Time	7	0-10
d	“CP5”	Perm Press WASH Agitate Time	10	0-10
e	“CP6”	Perm Press EXTRA RINSE Agitate Time	0	0-10
f	“CP8”	Perm Press FINAL SPIN Time	6	0-10
g	“CP9”	Delicate WASH Agitate Time	10	0-10
h	“CP10”	Delicate EXTRA RINSE Agitate Time	0	0-10
i	“CP12”	Delicate FINAL SPIN Time	5	0-10
j	“CP13”	Warm Rinse Option	oFF	on/oFF
27	“droP”	Drop Off Mode (On/Off)	oFF	on/oFF
28	“LPSA”	Low Power/Auto Shutdown A Days Enable (On/Off)	oFF	on/oFF
29	“LPSb”	Low Power/Auto Shutdown B Days Enable (On/Off)	oFF	on/oFF
30	“LPSC”	Low Power/Auto Shutdown C Days Enable (On/Off)	oFF	on/oFF
31	“LPSd”	Low Power/Auto Shutdown D Days Enable (On/Off)	oFF	on/oFF
32	“PFR”	Power Fail Reset	oFF	oFF/133-255
33	“IrA”	IR Access (On/Off)	on	on/oFF
34	“rAEn”	Manual Rapid Advance (On/Off)	on	on/oFF
35	“dAEn”	Manual Diagnostics (On/Off)	on	on/oFF
36	“PtEn”	Production Test Cycle (On/Off)	on	on/oFF

Programming Control

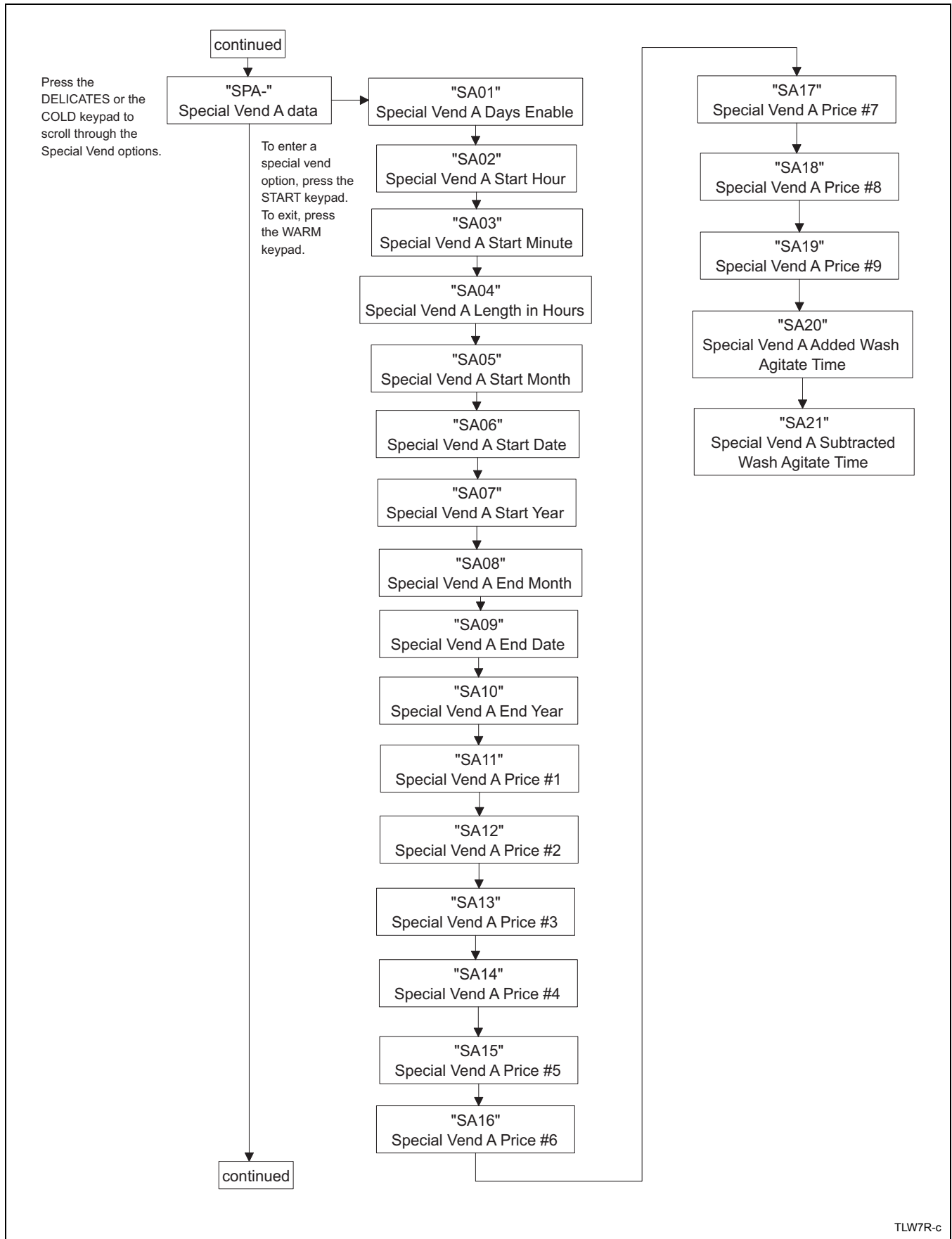


TLW9R-a



TLW7R-b

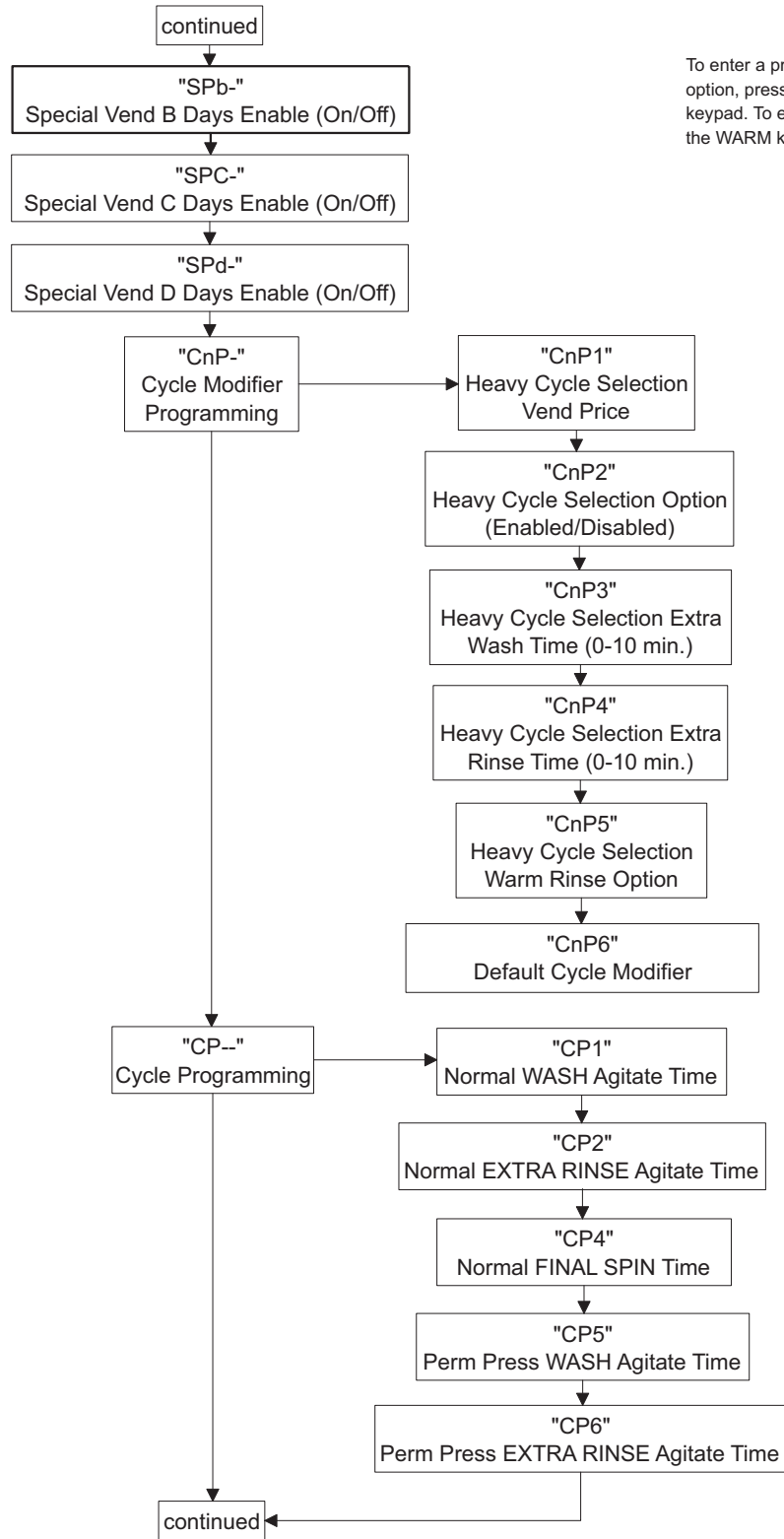
Programming Control



TLW7R-c

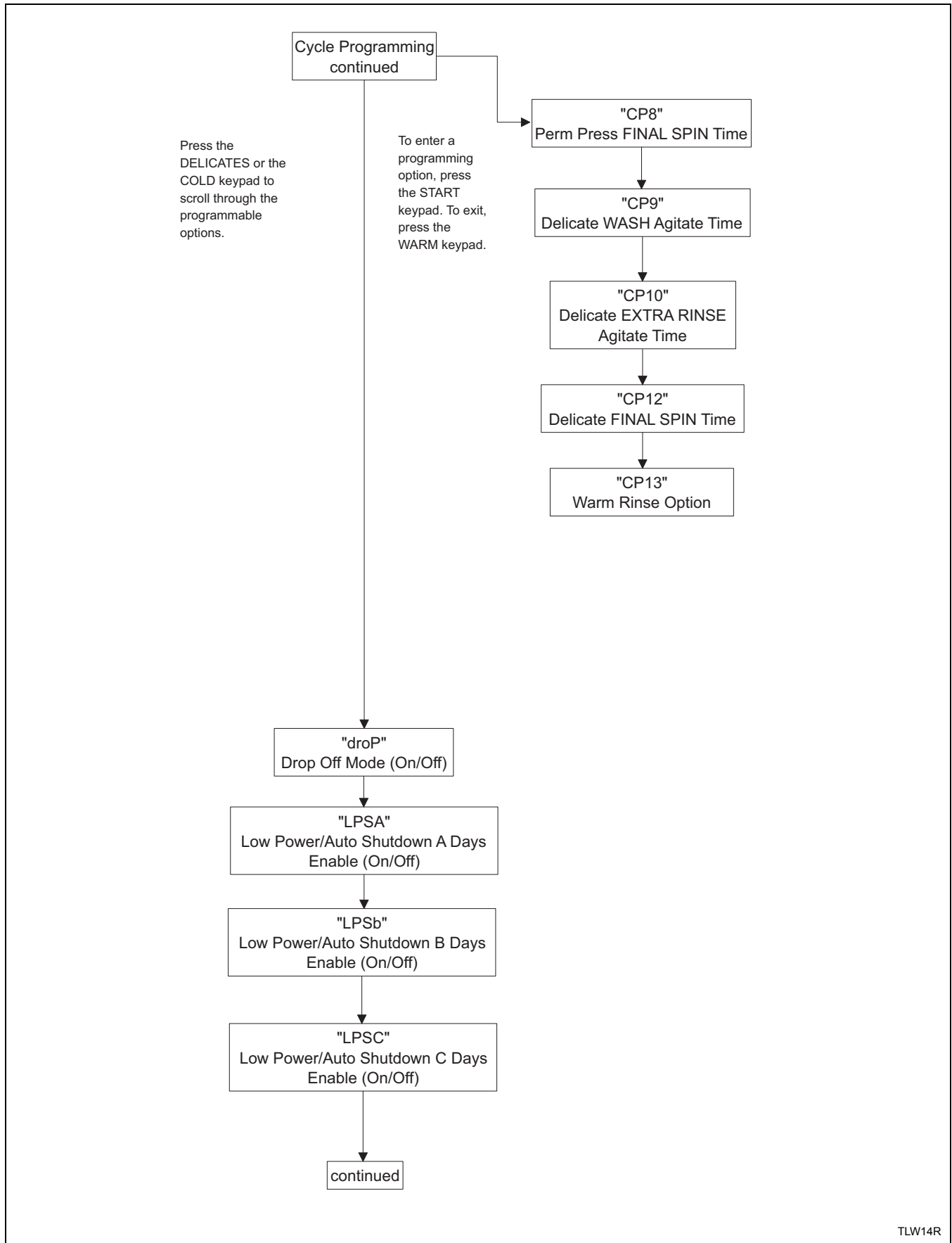
Press the DELICATES or the COLD keypad to scroll through the programmable options.

To enter a programming option, press the START keypad. To exit, press the WARM keypad.

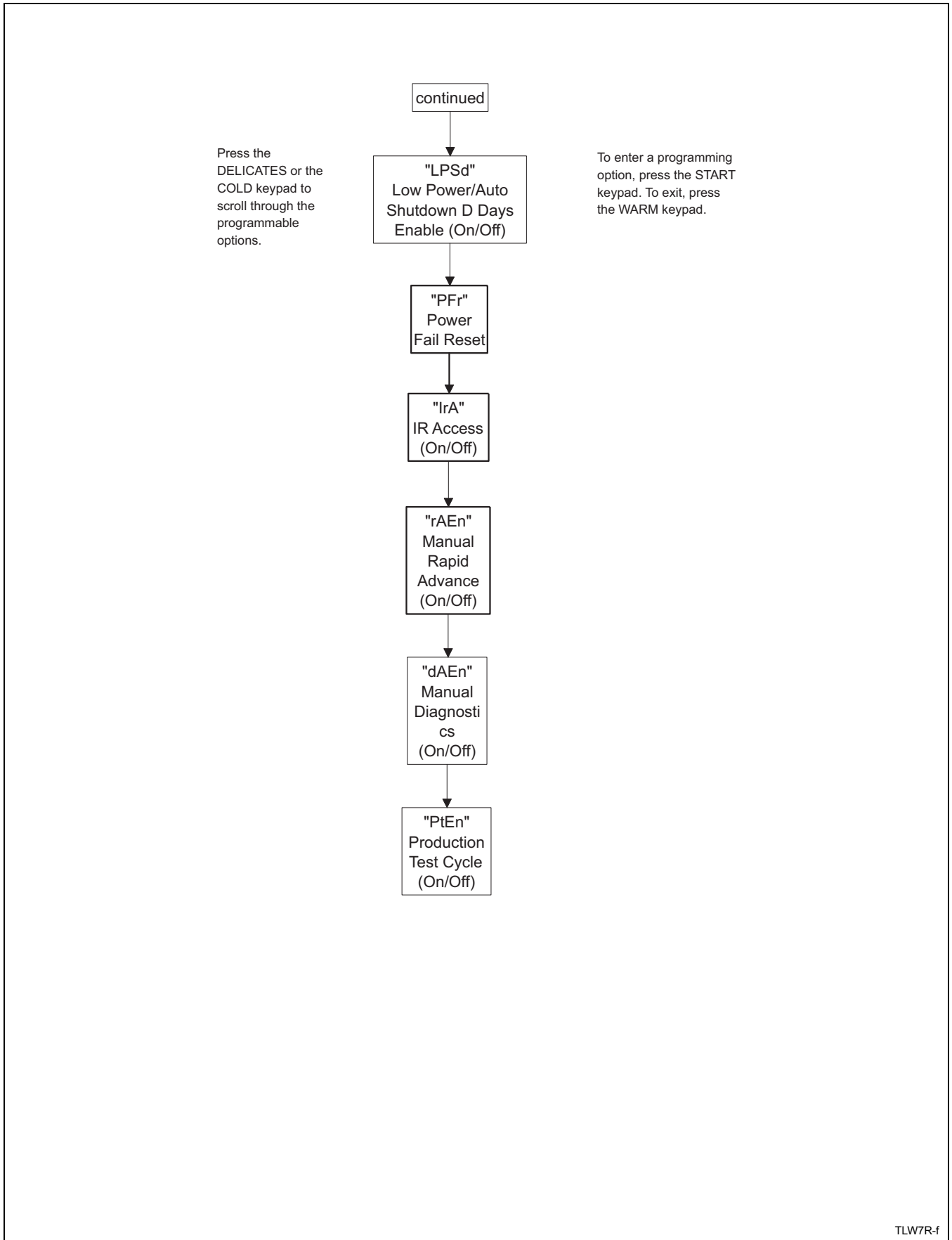


TLW13R

Programming Control



TLW14R



TLW7R-f

Programming Control

1. Vend Price #1 “AtS1”

This option allows the owner to set the vend price for a normal/hot wash. This vend price will be shown in the display when NORMAL and HOT are selected.

How to Program the Vend Price #1

1. Control must be in Manual Mode. Refer to *Entering the Manual Mode*.
2. Press the DELICATES (^) or the COLD (v) keypad until “Prog” appears in the display. Press the START (enter) keypad.
3. “AtS1” will appear in the display. Press the START (enter) keypad.
4. There are five digits in the Vend Price #1. The fifth digit will appear in the display and will flash one second on, one second off. Refer to *Figure 3*.

NOTE: If the vend price is 10000 or more, the fifth digit is “1-6”. If the vend price is 9999 or less, the fifth digit is “0”.

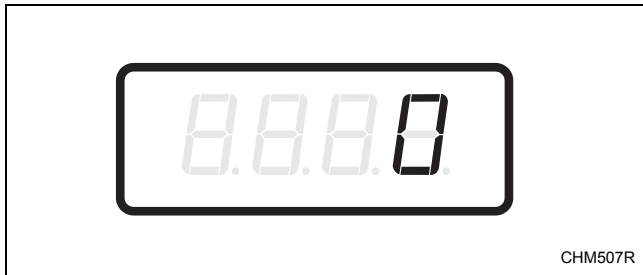


Figure 3

5. Press the DELICATES (^) or the COLD (v) keypad to increase or decrease the value of the fifth digit.

NOTE: The vend price can be set from 1 to 65,535. The factory default setting is 200.

6. Press the START (enter) keypad to enter the fifth digit and display remaining four digits. The active digit will flash one second on and one second off.

NOTE: To go back to the current programmable option without changing the value, press the WARM (<) keypad.

7. Press the DELICATES (^) or the COLD (v) keypad to increase or decrease the value of the active digit and the START (enter) keypad to enter the value of the digit and advance to the next digit.
8. Press the START (enter) keypad with the last active digit. The next option, “dEn1”, will appear in the display.

NOTE: To program “dEn1” (Coin #1 Value), refer to *option 2*. To program other options, refer to the appropriate section.

How to Exit Programming Feature

Press the WARM (<) keypad until the control returns to Ready Mode.

2. Coin #1 Value “dEn1”

This option allows the owner to set a specific numerical value for a coin entered. For example, in the United States the coin value for one quarter would be measured in cents (25). Therefore, the coin value entered for one quarter would 00025.

If the Vend Price #1 (*option 1*) is set for “150”, and the Coin Value is set for “00025”, the vend price displayed will decrease by 25 for each coin entered.

How to Program Coin #1 Value

1. Control must be in Manual Mode. Refer to *Entering the Manual Mode*.
2. Press the DELICATES (^) or the COLD (v) keypad until “Prog” appears in the display. Press the START (enter) keypad and “AtS1” will appear in the display.
3. Press the DELICATES (^) or the COLD (v) keypad to scroll through the programmable options until “dEn1” appears in the display.
4. When “dEn1” appears in the display, press the START (enter) keypad. There are five digits in the Coin #1 Value. The fifth digit will appear in the display and will flash one second on, one second off. Refer to *Figure 4*.

NOTE: If the vend price is 10000 or more, the fifth digit is “1-6”. If the vend price is 9999 or less, the fifth digit is “0”.

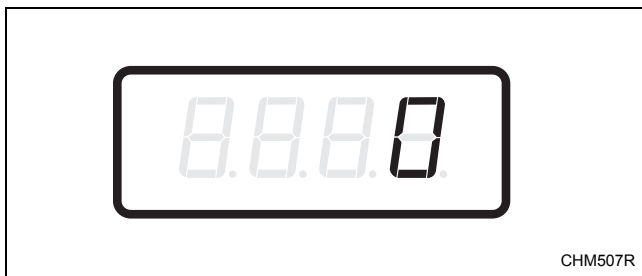


Figure 4

5. Press the DELICATES (^) or the COLD (v) keypad to increase or decrease the value of the fifth digit.

NOTE: The coin value can be set from 1 to 65,535. The factory default setting is 25.

6. Press the START (enter) keypad to enter the fifth digit and display remaining four digits. The active digit will flash one second on and one second off.

NOTE: To go back to the current programmable option without changing the value, press the WARM (<) keypad.

7. Press the DELICATES (^) or the COLD (v) keypad to increase or decrease the value of the active digit and the START (enter) keypad to enter the value of the digit and advance to the next digit.
8. Press the START (enter) keypad with the last active digit. The next option, “dEn2”, will appear in the display.

NOTE: To program “dEn2” (Coin #2 Value), refer to *option 3*. To program other options, refer to the appropriate section.

How to Exit Programming Feature

Press the WARM (<) keypad until the control returns to Ready Mode.

Programming Control

3. Coin #2 Value “dEn2”

This option allows the owner to set a specific numerical value for a coin entered when using the dual coin drop. For example, the coin value for a dollar coin would be measured in cents (100). Therefore, the coin value entered for one dollar coin would be 00100.

If the Vend Price #1 (*option 1*) is set for “200”, and the Coin Value is set for “00100”, the vend price displayed will decrease by 100 for each dollar coin entered.

How to Program Coin #2 Value

1. Control must be in Manual Mode. Refer to *Entering the Manual Mode*.
2. Press the DELICATES (^) or the COLD (v) keypad until “Prog” appears in the display. Press the START (enter) keypad and “AtS1” will appear in the display.
3. Press the DELICATES (^) or the COLD (v) keypad to scroll through the programmable options until “dEn2” appears in the display.
4. When “dEn2” appears in the display, press the START (enter) keypad. There are five digits in the Coin #2 Value. The fifth digit will appear in the display and will flash one second on and one second off. Refer to *Figure 5*.

NOTE: If the vend price is 10000 or more, the fifth digit is “1-6”. If the vend price is 9999 or less, the fifth digit is “0”.

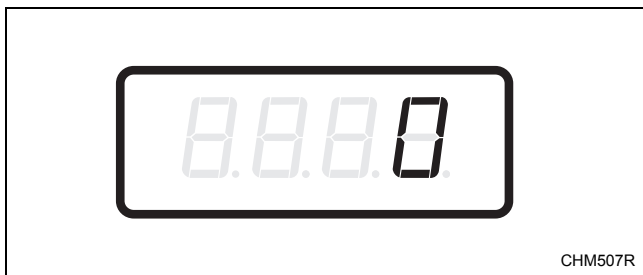


Figure 5

5. Press the DELICATES (^) or the COLD (v) keypad to increase or decrease the value of the fifth digit.

NOTE: The coin value can be set from 1 to 65,535. The factory default setting is 100.

6. Press the START (enter) keypad to enter the fifth digit and display remaining four digits. The active digit will flash one second on and one second off.

NOTE: To go back to the current programmable option without changing the value, press the WARM (<) keypad.

7. Press the DELICATES (^) or the COLD (v) keypad to increase or decrease the value of the active digit and the START (enter) keypad to enter the value of the digit and advance to the next digit.
8. Press the START (enter) keypad with the last active digit. The next option, “PLSE”, will appear in the display.

NOTE: To program “PLSE” (Start Pulse Value), refer to *option 4*. To program other options, refer to the appropriate section.

How to Exit Programming Feature

Press the WARM (<) keypad until the control returns to Ready Mode.

4. Start Pulse Value “PLSE”

This option allows the owner to program the value of the Start Pulse if used for multiple pulses with an after-market central card reader or pay system. Refer to *option 5* for additional information.

How to Program Start Pulse Value

1. Control must be in Manual Mode. Refer to *Entering the Manual Mode*.
2. Press the DELICATES (^) or the COLD (v) keypad until “Prog” appears in the display. Press the START (enter) keypad and “AtS1” will appear in the display.
3. Press the DELICATES (^) or the COLD (v) keypad to scroll through the programmable options until “PLSE” appears in the display.
4. When “PLSE” appears in the display, press the START (enter) keypad. There are five digits in the Start Pulse Value. The fifth digit will appear in the display and will flash one second on and one second off. Refer to *Figure 6*.

NOTE: If the vend price is 10000 or more, the fifth digit is “1-6”. If the vend price is 9999 or less, the fifth digit is “0”.

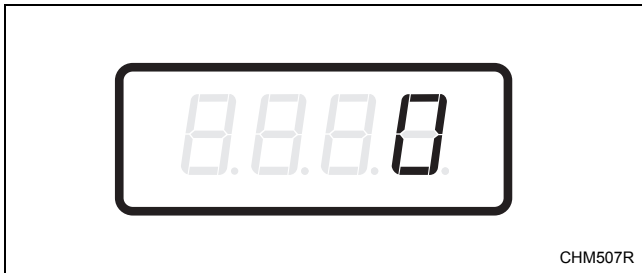


Figure 6

5. Press the DELICATES (^) or the COLD (v) keypad to increase or decrease the value of the fifth digit.

NOTE: The Start Pulse Value can be set from 1 to 65,535. The factory default setting is 100.

6. Press the START (enter) keypad to enter the fifth digit and display remaining four digits. The active digit will flash one second on and one second off.

NOTE: To go back to the current programmable option without changing the value, press the WARM (<) keypad.

7. Press the DELICATES (^) or the COLD (v) keypad to increase or decrease the value of the active digit and the START (enter) keypad to enter the value of the digit and advance to the next digit.
8. Press the START (enter) keypad with the last active digit. The next option, “PLSn”, will appear in the display.

NOTE: To program “PLSn” (Start Pulse Mode), refer to *option 5*. To program other options, refer to the appropriate section.

How to Exit Programming Feature

Press the WARM (<) keypad until the control returns to Ready Mode.

Programming Control

5. Start Pulse Mode “PLSn”

This option allows the owner to program the Start Pulse Input. The Start Pulse Mode can be used for after-market central pay or card systems. The central system sends the start pulse to the Start Pulse Input of the control to start the cycle. If set for single pulse, one start pulse from the central system will start the cycle. If set for multiple pulses, each pulse will deduct from the vend price the value set up in *option 4 (Start Pulse Value)* until the vend is satisfied.

How to Program Start Pulse Mode

1. Control must be in Manual Mode. Refer to *Entering the Manual Mode*.
2. Press the DELICATES (^) or the COLD (v) keypad until “Prog” appears in the display. Press the START (enter) keypad and “AtS1” will appear in the display.
3. Press the DELICATES (^) or the COLD (v) keypad to scroll through the programmable options until “PLSn” appears in the display.
4. When “PLSn” appears in the display, press the START (enter) keypad. A number, or “oFF”, will appear in the display. The number corresponds to the current Start Pulse Mode Programming Value.
5. Locate the desired number in the first column of *Table 1* below.

“PLSn”		
Start Pulse Mode Value	Start Pulse ON/OFF	Single Pulse/ Multiple Pulses
oFF	OFF	Single Pulse
128*	ON	Single Pulse
192	ON	Multiple Pulses

* Factory default setting.

Table 1

6. Press the DELICATES (^) or the COLD (v) keypad to increase or decrease the current number until correct.

NOTE: To go back to the current programmable option without changing the value, press the WARM (<) keypad.

7. Press the START (enter) keypad when the correct number appears in the display. The next option, “AtyP”, will appear in the display.

NOTE: To program “AtyP” (Available Type), refer to *option 6*. To program other options, refer to the appropriate section.

How to Exit Programming Feature

Press the WARM (<) keypad until the control returns to Ready Mode.

6. Available Type “AtyP”

This option allows the owner to program when the control provides an available output for card and central pay systems.

How to Program Available Type

1. Control must be in Manual Mode. Refer to *Entering the Manual Mode*.
2. Press the DELICATES (^) or the COLD (v) keypad until “Prog” appears in the display. Press the START (enter) keypad and “AtS1” will appear in the display.
3. Press the DELICATES (^) or the COLD (v) keypad to scroll through the programmable options until “AtyP” appears in the display.
4. When “AtyP” appears in the display, press the START (enter) keypad. A number will appear in the display. This number corresponds to the current Available Type Value.
5. Press the DELICATES (^) or the COLD (v) keypad to increase or decrease the current number to the desired number selected from *Table 2*.

6. Press the START (enter) keypad when the correct number appears in the display. The next option, “dCYC”, will appear in the display.

NOTE: To program “dCYC” (Default Cycle), refer to *option 7*. To program other options, refer to the appropriate section.

How to Exit Programming Feature

Press the WARM (<) keypad until the control returns to Ready Mode.

Available Type Value	Mode(s) in Which Available Signal is Active
0*	Ready Mode only
1	Ready Mode, Partial Vend Mode
2	Ready Mode, End of Cycle Mode
3	Ready Mode, End of Cycle Mode, Partial Vend Mode
4	Ready Mode, Start Mode
5	Ready Mode, Partial Vend Mode, Start Mode
6	Ready Mode, End of Cycle Mode, Start Mode
7	Ready Mode, End of Cycle Mode, Partial Vend Mode, Start Mode

* Factory default setting.

Table 2

Programming Control

7. Default Cycle “dCYC”

This option allows the owner to set the default cycle and temperature the machine will enter when in the Ready Mode. When programming the default cycle, refer to *Table 3*.

How to Program Default Cycle

1. Control must be in Manual Mode. Refer to *Entering the Manual Mode*.
2. Press the DELICATES (^) or the COLD (v) keypad until “Prog” appears in the display. Press the START (enter) keypad and “AtS1” will appear in the display.
3. Press the DELICATES (^) or the COLD (v) keypad to scroll through the programmable options until “dCYC” appears in the display.
4. When “dCYC” appears in the display, press the START (enter) keypad. A number will appear in the display. This number corresponds to the current default cycle value. Refer to *Table 3*.
5. Press the DELICATES (^) or the COLD (v) keypad to increase or decrease the current number to the desired number selected from *Table 3*.
6. Press the START (enter) keypad when the correct number appears in the display. The next option, “OPL”, will appear in the display.

NOTE: To program “OPL” (OPL Mode), refer to option 8. To program other options, refer to the appropriate section.

How to Exit Programming Feature

Press the WARM (<) keypad until the control returns to Ready Mode.

How to Read *Table 3*

To determine the correct number required to program Default Cycle, use the following table. The Default Value column contains the number required in step 5. The other columns correspond to cycle type and wash temperature.

The default cycle programmed at the factory is 5, Perm Press/Warm.

The corresponding cycle and temperature LEDs will be lit while selecting a default cycle. For example, when the display shows “7”, the Delicate and Hot LEDs are lit.

“dCYC”		
Default Value	Cycle Type	Wash Temperature
1	Normal	Hot
2	Normal	Warm
3	Normal	Cold
4	Perm Press	Hot
5*	Perm Press	Warm
6	Perm Press	Cold
7	Delicate	Hot
8	Delicate	Warm
9	Delicate	Cold

* Factory default setting.

Table 3

8. OPL Mode Enable/Disable “oPL”

This option allows the owner to enable or disable the OPL Mode in which no vend price needs to be satisfied to operate the machine.

How to Program the OPL Mode Enable/Disable

1. Control must be in Manual Mode. Refer to *Entering the Manual Mode*.
2. Press the DELICATES (^) or the COLD (v) keypad until “Prog” appears in the display. Press the START (enter) keypad and “AtS1” will appear in the display.
3. Press the DELICATES (^) or the COLD (v) keypad to scroll through the programmable options until “oPL” appears in the display.
4. When “oPL” appears in the display, press the START (enter) keypad. The current OPL Mode Enable/Disable status will appear in the display.
 “on” = Option Enabled
 “off” = Option Disabled
 (factory default setting)
5. Press the DELICATES (^) or the COLD (v) keypad to change the current status.
6. Press the START (enter) keypad when the desired status appears in the display. The next option, “Aud”, will appear in the display.

NOTE: To program “Aud” (Audio Signal), refer to *option 9*. To program other options, refer to the appropriate section.

How to Exit Programming Feature

Press the WARM (<) keypad until the control returns to Ready Mode.

9. Audio Signal “Aud”

This option allows the owner to program when the signal will sound.

There are five occasions when a signal may sound during the washer operation. These five occasions are listed below:

- 1. End of Cycle Signal**
By default, the signal is turned off. If turned on, the signal will sound for three seconds at the end of a cycle.
- 2. Keypad Depression Signal**
By default, this signal is turned on and will sound for a quarter of a second. This signal will sound each time a keypad is pressed.
- 3. Coin Input/Card Insertion Signal**
By default, this signal is turned on and will sound for a quarter of a second each time a coin or card is entered.
- 4. Remove Card Signal (Card Models Only)**
By default, this signal is turned on and will sound one second on and one second off when the control is prompting for card removal.
- 5. Signal for Start**
By default, this signal is turned on and will sound one second on and one second off for 10 seconds after vend price has been satisfied.

How to Program the Audio Signal

1. Control must be in Manual Mode. Refer to *Entering the Manual Mode*.
2. Press the DELICATES (^) or the COLD (v) keypad until “Prog” appears in the display. Press the START (enter) keypad and “AtS1” will appear in the display.
3. Press the DELICATES (^) or the COLD (v) keypad to scroll through the programmable options until “Aud” appears in the display.
4. When “Aud” appears in the display press the START (enter) keypad. A number will appear in the display. This number corresponds to the current Audio Signal Programming Value.
5. Locate the desired number in the first column of *Table 4* on the following page.
6. Press the DELICATES (^) or the COLD (v) keypad to increase or decrease the current number until correct.

For Example: A user might wish to have the signal sound only when a keypad is pressed. Entering the number “1” in step 5 would turn off all the options except KEYPAD. In this instance, the signal would sound only when a keypad is pressed.

7. Press the START (enter) keypad when the correct number appears in the display. The next option, “CARD”, will appear in the display.

NOTE: To program “CARD” (Card Reader Display Control), refer to *option 10*. To program other options, refer to the appropriate section.

How to Exit Programming Feature

Press the WARM (<) keypad until the control returns to Ready Mode.

How to Read Table 4

To determine the correct number required to program the Audio Signal, use the following chart. The Signal Value column contains the number required in step 6. The other columns correspond to individual options.

Each column of options contains a unique combination of the words “ON” and “OFF” that indicates if that column’s option is turned on or off when the Signal Value is entered. Select the desired combination of options and enter the number found in the Signal Value column.

The default cycle programmed at the factory is 29.

Signal Value	Start Mode	Remove Card	Coin/ Card Input	End of Cycle	Key Pressed
0	OFF	OFF	OFF	OFF	OFF
1	OFF	OFF	OFF	OFF	ON
2	OFF	OFF	OFF	ON	OFF
3	OFF	OFF	OFF	ON	ON
4	OFF	OFF	ON	OFF	OFF
5	OFF	OFF	ON	OFF	ON
6	OFF	OFF	ON	ON	OFF
7	OFF	OFF	ON	ON	ON
8	OFF	ON	OFF	OFF	OFF
9	OFF	ON	OFF	OFF	ON
10	OFF	ON	OFF	ON	OFF
11	OFF	ON	OFF	ON	ON
12	OFF	ON	ON	OFF	OFF
13	OFF	ON	ON	OFF	ON
14	OFF	ON	ON	ON	OFF
15	OFF	ON	ON	ON	ON
16	ON	OFF	OFF	OFF	OFF
17	ON	OFF	OFF	OFF	ON
18	ON	OFF	OFF	ON	OFF
19	ON	OFF	OFF	ON	ON
20	ON	OFF	ON	OFF	OFF
21	ON	OFF	ON	OFF	ON
22	ON	OFF	ON	ON	OFF
23	ON	OFF	ON	ON	ON
24	ON	ON	OFF	OFF	OFF
25	ON	ON	OFF	OFF	ON
26	ON	ON	OFF	ON	OFF
27	ON	ON	OFF	ON	ON
28	ON	ON	ON	OFF	OFF
29*	ON	ON	ON	OFF	ON
30	ON	ON	ON	ON	OFF
31	ON	ON	ON	ON	ON

* Factory default setting.

Table 4

Programming Control

10. Card Reader Display Control “CArd”

This option allows the owner to program whether the display is controlled by the machine’s electronic control or by the card reader.

NOTE: This feature does not need to be programmed manually. The card reader itself makes this determination.

How to Program the Card Reader Display Control

1. Control must be in Manual Mode. Refer to *Entering the Manual Mode*.
2. Press the DELICATES (^) or the COLD (v) keypad until “Prog” appears in the display. Press the START (enter) keypad and “AtS1” will appear in the display.
3. Press the DELICATES (^) or the COLD (v) keypad to scroll through the programmable options until “CArd” appears in the display.
4. When “CArd” appears in the display, press the START (enter) keypad. The current Card Reader Display Control status will appear in the display.
“on” = Card Reader controls display
“oFF” = Machine Electronic Control controls display (factory default setting)

5. Press the DELICATES (^) or the COLD (v) keypad to change the current status.
6. Press the START (enter) keypad when the desired status appears in the display. The next option, “Err-”, will appear in the display.

NOTE: To program “Err-” (Error Code Programming), refer to *option 11*. To program other options, refer to the appropriate section.

How to Exit Programming Feature

Press the WARM (<) keypad until the control returns to Ready Mode.

11. Error Code Programming “Err-”

This option allows the owner to turn on or turn off certain errors in the control.

How to Program Error Code Programming

1. Control must be in Manual Mode. Refer to *Entering the Manual Mode*.
2. Press the DELICATES (^) or the COLD (v) keypad until “Prog” appears in the display. Press the START (enter) keypad and “AtS1” will appear in the display.
3. Press the DELICATES (^) or the COLD (v) keypad to scroll through the programmable options until “Err-” appears in the display.
4. When “Err-” appears in the display, press the START (enter) keypad. There are three programmable error code parameters. Refer to *Table 5*.

			Factory Default Setting
“CEr-”	Coin Error Parameters		
	“CEr1”	Coin Error	“on”
	“CEr2”	Coin Error Penalty	“oFF”
	“CEr3”	Coin Drops Header Present Error	“on”
“E FL”	Fill Error		
	“EFL1”	Fill Error	“on”
	“EFL2”	Fill Error Time	30
“Edr”	Drain Error		“on”

Table 5

5. Press the DELICATES (^) or the COLD (v) keypad to select error code.
6. Press the START (enter) keypad when the correct code appears in the display. The current status will appear in the display.

NOTE: Press the DELICATES (^) or the COLD (v) keypad and then the START (enter) keypad again to choose the specific coin or fill error parameter. Refer to *Table 5*.

7. “oFF” indicates the option is disabled. “on” indicates the option is enabled. Press the DELICATES (^) or the COLD (v) keypad to change the status.

NOTE: If programming the Fill Error Time, “EFL2” increase or decrease the value between 5 and 90 minutes.

8. Press the START (enter) keypad when the correct status appears in the display. The next Error Code Programming option will appear in the display.

NOTE: To program “AtS2” (Vend Price #2), press the WARM (<) keypad to return to the main programming options list and refer to *option 12*. To program other options, refer to the appropriate section.

How to Exit Programming Feature

Press the WARM (<) keypad until the control returns to Ready Mode.

Programming Control

12. Vend Price #2 “AtS2”

This option allows the owner to set the vend price for a normal/warm wash. This vend price will be shown in the display when NORMAL and WARM are selected.

How to Program the Vend Price #2

1. Control must be in Manual Mode. Refer to *Entering the Manual Mode*.
2. Press the DELICATES (^) or the COLD (v) keypad until “Prog” appears in the display. Press the START (enter) keypad, and “AtS1” will appear in the display.
3. Press the DELICATES (^) or the COLD (v) keypad to scroll through the programmable options until “AtS2” appears in the display.
4. When “AtS2” appears in the display, press the START (enter) keypad. There are five digits in the Vend Price #2. The fifth digit will appear in the display and will flash one second on, one second off. Refer to *Figure 7*.

NOTE: If the vend price is 10000 or more, the fifth digit is “1-6”. If the vend price is 9999 or less, the fifth digit is “0”.

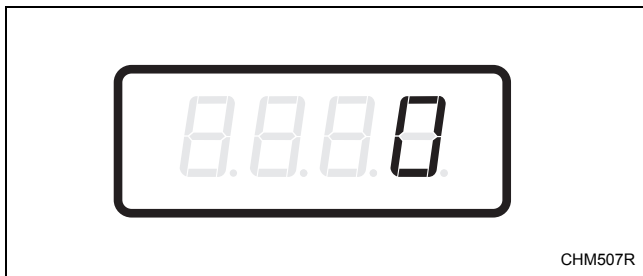


Figure 7

5. Press the DELICATES (^) or the COLD (v) keypad to increase or decrease the value of the fifth digit.

NOTE: The vend price can be set from 1 to 65,535. The factory default setting is 200.

6. Press the START (enter) keypad to enter the fifth digit and display remaining four digits. The active digit will flash one second on and one second off.

NOTE: To go back to the current programmable option without changing the value, press the WARM (<) keypad.

7. Press the DELICATES (^) or the COLD (v) keypad to increase or decrease the value of the active digit and the START (enter) keypad to enter the value of the digit and advance to the next digit.
8. Press the START (enter) keypad with the last active digit. The next option, “AtS3”, will appear in the display.

NOTE: To program “AtS3” (Vend Price #3), refer to *option 13*. To program other options, refer to the appropriate section.

How to Exit Programming Feature

Press the WARM (<) keypad until the control returns to Ready Mode.

13. Vend Price #3 “AtS3”

This option allows the owner to set the vend price for a normal/cold wash. This vend price will be shown in the display when NORMAL and COLD are selected.

How to Program the Vend Price #3

1. Control must be in Manual Mode. Refer to *Entering the Manual Mode*.
2. Press the DELICATES (^) or the COLD (v) keypad until “Prog” appears in the display. Press the START (enter) keypad and “AtS1” will appear in the display.
3. Press the DELICATES (^) or the COLD (v) keypad to scroll through the programmable options until “AtS3” appears in the display.
4. When “AtS3” appears in the display, press the START (enter) keypad. There are five digits in the Vend Price #3. The fifth digit will appear in the display and will flash one second on, one second off. Refer to *Figure 8*.

NOTE: If the vend price is 10000 or more, the fifth digit is “1-6”. If the vend price is 9999 or less, the fifth digit is “0”.

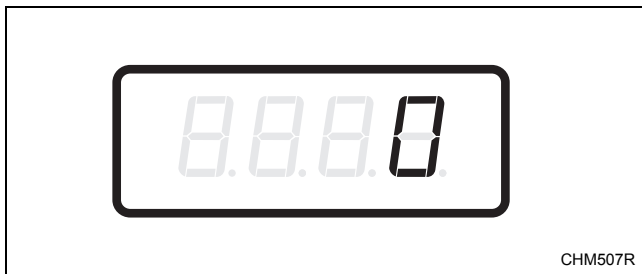


Figure 8

5. Press the DELICATES (^) or the COLD (v) keypad to increase or decrease the value of the fifth digit.

NOTE: The vend price can be set from 1 to 65,535. The factory default setting is 200.

6. Press the START (enter) keypad to enter the fifth digit and display remaining four digits. The active digit will flash one second on and one second off.

NOTE: To go back to the current programmable option without changing the value, press the WARM (<) keypad.

7. Press the DELICATES (^) or the COLD (v) keypad to increase or decrease the value of the active digit and the START (enter) keypad to enter the value of the digit and advance to the next digit.
8. Press the START (enter) keypad with the last active digit. The next option, “AtS4”, will appear in the display.

NOTE: To program “AtS4” (Vend Price #4), refer to *option 14*. To program other options, refer to the appropriate section.

How to Exit Programming Feature

Press the WARM (<) keypad until the control returns to Ready Mode.

Programming Control

14. Vend Price #4 “AtS4”

This option allows the owner to set the vend price for a perm press/hot wash. This vend price will be shown in the display when PERM PRESS and HOT are selected.

How to Program the Vend Price #4

1. Control must be in Manual Mode. Refer to *Entering the Manual Mode*.
2. Press the DELICATES (^) or the COLD (v) keypad until “Prog” appears in the display. Press the START (enter) keypad and “AtS1” will appear in the display.
3. Press the DELICATES (^) or the COLD (v) keypad to scroll through the programmable options until “AtS4” appears in the display.
4. When “AtS4” appears in the display, press the START (enter) keypad. There are five digits in the Vend Price #4. The fifth digit will appear in the display and will flash one second on, one second off. Refer to *Figure 9*.

NOTE: If the vend price is 10000 or more, the fifth digit is “1-6”. If the vend price is 9999 or less, the fifth digit is “0”.

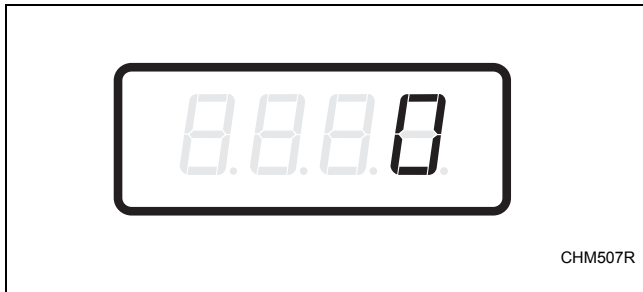


Figure 9

5. Press the DELICATES (^) or the COLD (v) keypad to increase or decrease the value of the fifth digit.

NOTE: The vend price can be set from 1 to 65,535. The factory default setting is 200.

6. Press the START (enter) keypad to enter the fifth digit and display remaining four digits. The active digit will flash one second on and one second off.

NOTE: To go back to the current programmable option without changing the value, press the WARM (<) keypad.

7. Press the DELICATES (^) or the COLD (v) keypad to increase or decrease the value of the active digit and the START (enter) keypad to enter the value of the digit and advance to the next digit.
8. Press the START (enter) keypad with the last active digit. The next option, “AtS5”, will appear in the display.

NOTE: To program “AtS5” (Vend Price #5), refer to *option 15*. To program other options, refer to the appropriate section.

How to Exit Programming Feature

Press the WARM (<) keypad until the control returns to Ready Mode.

15. Vend Price #5 “AtS5”

This option allows the owner to set the vend price for a perm press/warm wash. This vend price will be shown in the display when PERM PRESS and WARM are selected.

How to Program the Vend Price #5

1. Control must be in Manual Mode. Refer to *Entering the Manual Mode*.
2. Press the DELICATES (^) or the COLD (v) keypad until “Prog” appears in the display. Press the START (enter) keypad and “AtS1” will appear in the display.
3. Press the DELICATES (^) or the COLD (v) keypad to scroll through the programmable options until “AtS5” appears in the display.
4. When “AtS5” appears in the display, press the START (enter) keypad. There are five digits in the Vend Price #5. The fifth digit will appear in the display and will flash one second on, one second off. Refer to *Figure 10*.

NOTE: If the vend price is 10000 or more, the fifth digit is “1-6”. If the vend price is 9999 or less, the fifth digit is “0”.

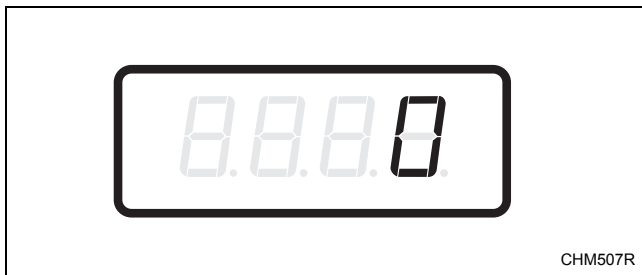


Figure 10

5. Press the DELICATES (^) or the COLD (v) keypad to increase or decrease the value of the fifth digit.

NOTE: The vend price can be set from 1 to 65,535. The factory default setting is 200.

6. Press the START (enter) keypad to enter the fifth digit and display remaining four digits. The active digit will flash one second on and one second off.

NOTE: To go back to the current programmable option without changing the value, press the WARM (<) keypad.

7. Press the DELICATES (^) or the COLD (v) keypad to increase or decrease the value of the active digit and the START (enter) keypad to enter the value of the digit and advance to the next digit.
8. Press the START (enter) keypad with the last active digit. The next option, “AtS6”, will appear in the display.

NOTE: To program “AtS6” (Vend Price #6), refer to *option 16*. To program other options, refer to the appropriate section.

How to Exit Programming Feature

Press the WARM (<) keypad until the control returns to Ready Mode.

Programming Control

16. Vend Price #6 “AtS6”

This option allows the owner to set the vend price for a perm press/cold wash. This vend price will be shown in the display when PERM PRESS and COLD are selected.

How to Program the Vend Price #6

1. Control must be in Manual Mode. Refer to *Entering the Manual Mode*.
2. Press the DELICATES (^) or the COLD (v) keypad until “Prog” appears in the display. Press the START (enter) keypad and “AtS1” will appear in the display.
3. Press the DELICATES (^) or the COLD (v) keypad to scroll through the programmable options until “AtS6” appears in the display.
4. When “AtS6” appears in the display, press the START (enter) keypad. There are five digits in the Vend Price #6. The fifth digit will appear in the display and will flash one second on, one second off. Refer to *Figure 11*.

NOTE: If the vend price is 10000 or more, the fifth digit is “1-6”. If the vend price is 9999 or less, the fifth digit is “0”.

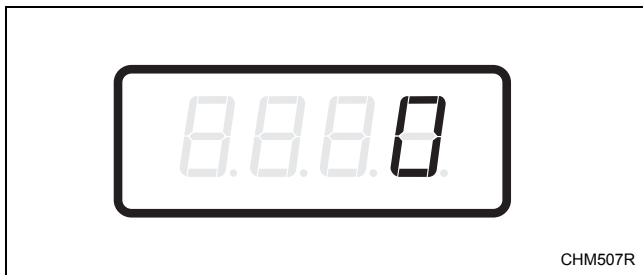


Figure 11

5. Press the DELICATES (^) or the COLD (v) keypad to increase or decrease the value of the fifth digit.

NOTE: The vend price can be set from 1 to 65,535. The factory default setting is 200.

6. Press the START (enter) keypad to enter the fifth digit and display remaining four digits. The active digit will flash one second on and one second off.

NOTE: To go back to the current programmable option without changing the value, press the WARM (<) keypad.

7. Press the DELICATES (^) or the COLD (v) keypad to increase or decrease the value of the active digit and the START (enter) keypad to enter the value of the digit and advance to the next digit.
8. Press the START (enter) keypad with the last active digit. The next option, “AtS7”, will appear in the display.

NOTE: To program “AtS7” (Vend Price #7), refer to *option 17*. To program other options, refer to the appropriate section.

How to Exit Programming Feature

Press the WARM (<) keypad until the control returns to Ready Mode.

17. Vend Price #7 “AtS7”

This option allows the owner to set the vend price for a delicate/hot wash. This vend price will be shown in the display when DELICATE and HOT are selected.

How to Program the Vend Price #7

1. Control must be in Manual Mode. Refer to *Entering the Manual Mode*.
2. Press the DELICATES (^) or the COLD (v) keypad until “Prog” appears in the display. Press the START (enter) keypad and “AtS1” will appear in the display.
3. Press the DELICATES (^) or the COLD (v) keypad to scroll through the programmable options until “AtS7” appears in the display.
4. When “AtS7” appears in the display, press the START (enter) keypad. There are five digits in the Vend Price #7. The fifth digit will appear in the display and will flash one second on, one second off. Refer to *Figure 12*.

NOTE: If the vend price is 10000 or more, the fifth digit is “1-6”. If the vend price is 9999 or less, the fifth digit is “0”.

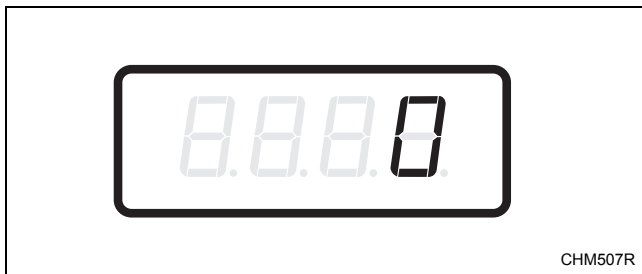


Figure 12

5. Press the DELICATES (^) or the COLD (v) keypad to increase or decrease the value of the fifth digit.

NOTE: The vend price can be set from 1 to 65,535. The factory default setting is 200.

6. Press the START (enter) keypad to enter the fifth digit and display remaining four digits. The active digit will flash one second on and one second off.

NOTE: To go back to the current programmable option without changing the value, press the WARM (<) keypad.

7. Press the DELICATES (^) or the COLD (v) keypad to increase or decrease the value of the active digit and the START (enter) keypad to enter the value of the digit and advance to the next digit.
8. Press the START (enter) keypad with the last active digit. The next option, “AtS8”, will appear in the display.

NOTE: To program “AtS8” (Vend Price #8), refer to *option 18*. To program other options, refer to the appropriate section.

How to Exit Programming Feature

Press the WARM (<) keypad until the control returns to Ready Mode.

Programming Control

18. Vend Price #8 “AtS8”

This option allows the owner to set the vend price for a delicate/warm wash. This vend price will be shown in the display when DELICATE and WARM are selected.

How to Program the Vend Price #8

1. Control must be in Manual Mode. Refer to *Entering the Manual Mode*.
2. Press the DELICATES (^) or the COLD (v) keypad until “Prog” appears in the display. Press the START (enter) keypad and “AtS1” will appear in the display.
3. Press the DELICATES (^) or the COLD (v) keypad to scroll through the programmable options until “AtS8” appears in the display.
4. When “AtS8” appears in the display, press the START (enter) keypad. There are five digits in the Vend Price #8. The fifth digit will appear in the display and will flash one second on, one second off. Refer to *Figure 13*.

NOTE: If the vend price is 10000 or more, the fifth digit is “1-6”. If the vend price is 9999 or less, the fifth digit is “0”.

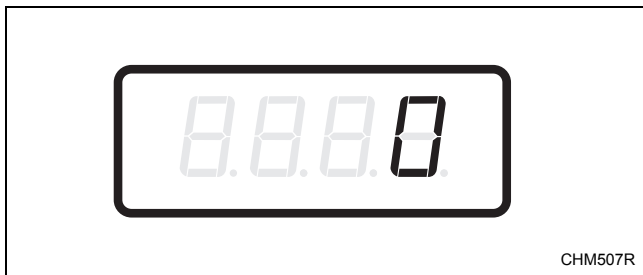


Figure 13

5. Press the DELICATES (^) or the COLD (v) keypad to increase or decrease the value of the fifth digit.

NOTE: The vend price can be set from 1 to 65,535. The factory default setting is 200.

6. Press the START (enter) keypad to enter the fifth digit and display remaining four digits. The active digit will flash one second on and one second off.

NOTE: To go back to the current programmable option without changing the value, press the WARM (<) keypad.

7. Press the DELICATES (^) or the COLD (v) keypad to increase or decrease the value of the active digit and the START (enter) keypad to enter the value of the digit and advance to the next digit.
8. Press the START (enter) keypad with the last active digit. The next option, “AtS9”, will appear in the display.

NOTE: To program “AtS9” (Vend Price #9), refer to *option 19*. To program other options, refer to the appropriate section.

How to Exit Programming Feature

Press the WARM (<) keypad until the control returns to Ready Mode.

19. Vend Price #9 “AtS9”

This option allows the owner to set the vend price for a delicate/cold wash. This vend price will be shown in the display when DELICATES and COLD are selected.

How to Program the Vend Price #9

1. Control must be in Manual Mode. Refer to *Entering the Manual Mode*.
2. Press the DELICATES (^) or the COLD (v) keypad until “Prog” appears in the display. Press the START (enter) keypad and “AtS1” will appear in the display.
3. Press the DELICATES (^) or the COLD (v) keypad to scroll through the programmable options until “AtS9” appears in the display.
4. When “AtS9” appears in the display, press the START (enter) keypad. There are five digits in the Vend Price #9. The fifth digit will appear in the display and will flash one second on, one second off. Refer to *Figure 14*.

NOTE: If the vend price is 10000 or more, the fifth digit is “1-6”. If the vend price is 9999 or less, the fifth digit is “0”.

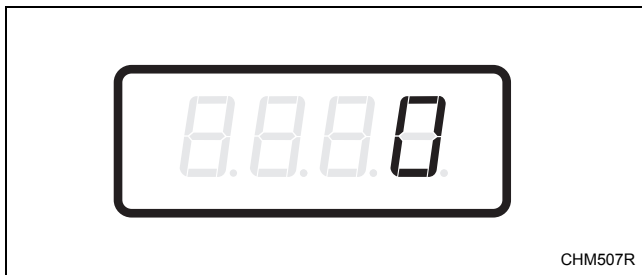


Figure 14

5. Press the DELICATES (^) or the COLD (v) keypad to increase or decrease the value of the fifth digit.

NOTE: The vend price can be set from 1 to 65,535. The factory default setting is 200.

6. Press the START (enter) keypad to enter the fifth digit and display remaining four digits. The active digit will flash one second on and one second off.

NOTE: To go back to the current programmable option without changing the value, press the WARM (<) keypad.

7. Press the DELICATES (^) or the COLD (v) keypad to increase or decrease the value of the active digit and the START (enter) keypad to enter the value of the digit and advance to the next digit.
8. Press the START (enter) keypad with the last active digit. The next option, “rtC-”, will appear in the display.

NOTE: To program “rtC-” (Real Time Clock), refer to *option 20*. To program other options, refer to the appropriate section.

How to Exit Programming Feature

Press the WARM (<) keypad until the control returns to Ready Mode.

Programming Control

20. Set Real-Time Clock “rtC-”

This option allows the owner to set the controls internal clock to the correct time and date.

How to Program the Time and Date

1. Control must be in Manual Mode. Refer to *Entering the Manual Mode*.
2. Press the DELICATES (^) or the COLD (v) keypad until “Prog” appears in the display. Press the START (enter) keypad and “AtS1” will appear in the display.
3. Press the DELICATES (^) or the COLD (v) keypad to scroll through the programmable options until “rtC-” appears in the display. Press the START keypad and “rtC1” will appear in the display.
4. Press the DELICATES (^) or the COLD (v) keypad to scroll through the programmable options. Refer to *Table 6*.

“rtC1”	Programs Minutes
“rtC2”	Programs Hours
“rtC3”	Programs Day of Week
“rtC4”	Programs Date of Month
“rtC5”	Programs Month
“rtC6”	Programs Year
“rtC7”	Programs Daylight Savings

Table 6

5. When the desired option appears in the display, press the START (enter) keypad. The current value will appear in the display.
6. Press the DELICATES (^) or the COLD (v) keypad to increase or decrease the minutes, hours, day of week, date of month, month or year to the correct time or date.

NOTE: The hours will be displayed in military time. For day of week, Sunday is considered day one (1), Monday is day two (2) and so on. For year, the year 2000 is “0”, the year 2001 is “1” and so on.

If programming Daylight Savings, “rtC7”, “on” (factory default setting) enables Daylight Savings Time and “OFF” disables Daylight Savings Time.

7. Press the START (enter) keypad when the correct time or date appears in the display. The next Set Real-Time Clock option will appear in the display.

NOTE: To program “SPA-” (Special Vend A Data), press the WARM (<) keypad to return to the main programming options list and refer to *option 21*. To program other options, refer to the appropriate section.

How to Exit Programming Feature

Press the WARM (<) keypad until the control returns to Ready Mode.

21. Special Vend A Data “SPA-”

This option allows the owner to set the day or days of a special vend.

Special Vend A is used to change the standard vend prices for special occasions. The special vend can be programmed to start and end on a specific day or days of the week.

The owner may also turn the Special Vend A option on or off if desired.

The factory default setting for all Special Vend A programming options is zero (0).

How to Program Special Vend A Days Enable “SA01”

- Control must be in Manual Mode. Refer to *Entering the Manual Mode*.
- Press the DELICATES (^) or the COLD (v) keypad until “Prog” appears in the display. Press the START (enter) keypad and “AtS1” will appear in the display.
- Press the DELICATES (^) or the COLD (v) keypad to scroll through the programmable options until “SPA-” appears in the display. Press the START (enter) keypad and “SA01” will appear in the display.
- When “SA01” appears in the display, press the START (enter) keypad. A number will appear in the display that corresponds to the current Special Vend A Days Enable Programming Value.
- Locate the desired number in the first column of *Table 7* on the following pages.

- Press the DELICATES (^) or the COLD (v) keypad to increase or decrease the current number until correct.
- Press the START (enter) keypad when the correct number appears in the display. The next Special Vend A option, “SA02”, will appear in the display.

NOTE: To program “SA02” (Special Vend A Start Hour), continue to the next Special Vend A option. To program other options, press the WARM (<) keypad and refer to the appropriate section.

How to Exit Programming Feature

Press the WARM (<) keypad until the control returns to Ready Mode.

Programming Control

How to Read *Table 7*

To determine the correct number required to program the Special Vend Days Enable, use the following table. The Special Vend Value column contains the number required in step 6. The other columns correspond to individual days.

Each column of days contains a unique combination of the words “ON” and “OFF” that indicates if that column’s day is turned on or off when the value is entered. Select the desired combination of days and enter the number found in the value column.

“SA01”								
SPECIAL VEND VALUE	SAT	FRI	THUR	WED	TUE	MON	SUN	ON/OFF
0*	OFF	OFF	OFF	OFF	OFF	OFF	OFF	OFF
3	OFF	OFF	OFF	OFF	OFF	OFF	ON	ON
5	OFF	OFF	OFF	OFF	OFF	ON	OFF	ON
7	OFF	OFF	OFF	OFF	OFF	ON	ON	ON
9	OFF	OFF	OFF	OFF	ON	OFF	OFF	ON
11	OFF	OFF	OFF	OFF	ON	OFF	ON	ON
13	OFF	OFF	OFF	OFF	ON	ON	OFF	ON
15	OFF	OFF	OFF	OFF	ON	ON	ON	ON
17	OFF	OFF	OFF	ON	OFF	OFF	OFF	ON
19	OFF	OFF	OFF	ON	OFF	OFF	ON	ON
21	OFF	OFF	OFF	ON	OFF	ON	OFF	ON
23	OFF	OFF	OFF	ON	OFF	ON	ON	ON
25	OFF	OFF	OFF	ON	ON	OFF	OFF	ON
27	OFF	OFF	OFF	ON	ON	OFF	ON	ON
29	OFF	OFF	OFF	ON	ON	ON	OFF	ON
31	OFF	OFF	OFF	ON	ON	ON	ON	ON
33	OFF	OFF	ON	OFF	OFF	OFF	OFF	ON
35	OFF	OFF	ON	OFF	OFF	OFF	ON	ON
37	OFF	OFF	ON	OFF	OFF	ON	OFF	ON
39	OFF	OFF	ON	OFF	OFF	ON	ON	ON
41	OFF	OFF	ON	OFF	ON	OFF	OFF	ON
43	OFF	OFF	ON	OFF	ON	OFF	ON	ON
45	OFF	OFF	ON	OFF	ON	ON	OFF	ON
47	OFF	OFF	ON	OFF	ON	ON	ON	ON
49	OFF	OFF	ON	ON	OFF	OFF	OFF	ON
51	OFF	OFF	ON	ON	OFF	OFF	ON	ON
53	OFF	OFF	ON	ON	OFF	ON	OFF	ON
55	OFF	OFF	ON	ON	OFF	ON	ON	ON
57	OFF	OFF	ON	ON	ON	OFF	OFF	ON
59	OFF	OFF	ON	ON	ON	OFF	ON	ON
61	OFF	OFF	ON	ON	ON	ON	OFF	ON
63	OFF	OFF	ON	ON	ON	ON	ON	ON
65	OFF	ON	OFF	OFF	OFF	OFF	OFF	ON
67	OFF	ON	OFF	OFF	OFF	OFF	ON	ON

* Factory default setting.

Table 7 (continued)

Table 7 (continued)

"SA01"								
SPECIAL VEND VALUE	SAT	FRI	THUR	WED	TUE	MON	SUN	ON/OFF
69	OFF	ON	OFF	OFF	OFF	ON	OFF	ON
71	OFF	ON	OFF	OFF	OFF	ON	ON	ON
73	OFF	ON	OFF	OFF	ON	OFF	OFF	ON
75	OFF	ON	OFF	OFF	ON	OFF	ON	ON
77	OFF	ON	OFF	OFF	ON	ON	OFF	ON
79	OFF	ON	OFF	OFF	ON	ON	ON	ON
81	OFF	ON	OFF	ON	OFF	OFF	OFF	ON
83	OFF	ON	OFF	ON	OFF	OFF	ON	ON
85	OFF	ON	OFF	ON	OFF	ON	OFF	ON
87	OFF	ON	OFF	ON	OFF	ON	ON	ON
89	OFF	ON	OFF	ON	ON	OFF	OFF	ON
91	OFF	ON	OFF	ON	ON	OFF	ON	ON
93	OFF	ON	OFF	ON	ON	ON	OFF	ON
95	OFF	ON	OFF	ON	ON	ON	ON	ON
97	OFF	ON	ON	OFF	OFF	OFF	OFF	ON
99	OFF	ON	ON	OFF	OFF	OFF	ON	ON
101	OFF	ON	ON	OFF	OFF	ON	OFF	ON
103	OFF	ON	ON	OFF	OFF	ON	ON	ON
105	OFF	ON	ON	OFF	ON	OFF	OFF	ON
107	OFF	ON	ON	OFF	ON	OFF	ON	ON
109	OFF	ON	ON	OFF	ON	ON	OFF	ON
111	OFF	ON	ON	OFF	ON	ON	ON	ON
113	OFF	ON	ON	ON	OFF	OFF	OFF	ON
115	OFF	ON	ON	ON	OFF	OFF	ON	ON
117	OFF	ON	ON	ON	OFF	ON	OFF	ON
119	OFF	ON	ON	ON	OFF	ON	ON	ON
121	OFF	ON	ON	ON	ON	OFF	OFF	ON
123	OFF	ON	ON	ON	ON	OFF	ON	ON
125	OFF	ON	ON	ON	ON	ON	OFF	ON
127	OFF	ON	ON	ON	ON	ON	ON	ON
129	ON	OFF	OFF	OFF	OFF	OFF	OFF	ON
131	ON	OFF	OFF	OFF	OFF	OFF	ON	ON
133	ON	OFF	OFF	OFF	OFF	ON	OFF	ON
135	ON	OFF	OFF	OFF	OFF	ON	ON	ON
137	ON	OFF	OFF	OFF	ON	OFF	OFF	ON
139	ON	OFF	OFF	OFF	ON	OFF	ON	ON
141	ON	OFF	OFF	OFF	ON	ON	OFF	ON
143	ON	OFF	OFF	OFF	ON	ON	ON	ON
145	ON	OFF	OFF	ON	OFF	OFF	OFF	ON
147	ON	OFF	OFF	ON	OFF	OFF	ON	ON
149	ON	OFF	OFF	ON	OFF	ON	OFF	ON
151	ON	OFF	OFF	ON	OFF	ON	ON	ON
153	ON	OFF	OFF	ON	ON	OFF	OFF	ON
155	ON	OFF	OFF	ON	ON	OFF	ON	ON

Table 7 (continued)

Programming Control

Table 7 (continued)

“SA01”								
SPECIAL VEND VALUE	SAT	FRI	THUR	WED	TUE	MON	SUN	ON/OFF
157	ON	OFF	OFF	ON	ON	ON	OFF	ON
159	ON	OFF	OFF	ON	ON	ON	ON	ON
161	ON	OFF	ON	OFF	OFF	OFF	OFF	ON
163	ON	OFF	ON	OFF	OFF	OFF	ON	ON
165	ON	OFF	ON	OFF	OFF	ON	OFF	ON
167	ON	OFF	ON	OFF	OFF	ON	ON	ON
169	ON	OFF	ON	OFF	ON	OFF	OFF	ON
171	ON	OFF	ON	OFF	ON	OFF	ON	ON
173	ON	OFF	ON	OFF	ON	ON	OFF	ON
175	ON	OFF	ON	OFF	ON	ON	ON	ON
177	ON	OFF	ON	ON	OFF	OFF	OFF	ON
179	ON	OFF	ON	ON	OFF	OFF	ON	ON
181	ON	OFF	ON	ON	OFF	ON	OFF	ON
183	ON	OFF	ON	ON	OFF	ON	ON	ON
185	ON	OFF	ON	ON	ON	OFF	OFF	ON
187	ON	OFF	ON	ON	ON	OFF	ON	ON
189	ON	OFF	ON	ON	ON	ON	OFF	ON
191	ON	OFF	ON	ON	ON	ON	ON	ON
193	ON	ON	OFF	OFF	OFF	OFF	OFF	ON
195	ON	ON	OFF	OFF	OFF	OFF	ON	ON
197	ON	ON	OFF	OFF	OFF	ON	OFF	ON
199	ON	ON	OFF	OFF	OFF	ON	ON	ON
201	ON	ON	OFF	OFF	ON	OFF	OFF	ON
203	ON	ON	OFF	OFF	ON	OFF	ON	ON
205	ON	ON	OFF	OFF	ON	ON	OFF	ON
207	ON	ON	OFF	OFF	ON	ON	ON	ON
209	ON	ON	OFF	ON	OFF	OFF	OFF	ON
211	ON	ON	OFF	ON	OFF	OFF	ON	ON
213	ON	ON	OFF	ON	OFF	ON	OFF	ON
215	ON	ON	OFF	ON	OFF	ON	ON	ON
217	ON	ON	OFF	ON	ON	OFF	OFF	ON
219	ON	ON	OFF	ON	ON	OFF	ON	ON
221	ON	ON	OFF	ON	ON	ON	OFF	ON
223	ON	ON	OFF	ON	ON	ON	ON	ON
225	ON	ON	ON	OFF	OFF	OFF	OFF	ON
227	ON	ON	ON	OFF	OFF	OFF	ON	ON
229	ON	ON	ON	OFF	OFF	ON	OFF	ON
231	ON	ON	ON	OFF	OFF	ON	ON	ON
233	ON	ON	ON	OFF	ON	OFF	OFF	ON
235	ON	ON	ON	OFF	ON	OFF	ON	ON
237	ON	ON	ON	OFF	ON	ON	OFF	ON
239	ON	ON	ON	OFF	ON	ON	ON	ON
241	ON	ON	ON	ON	OFF	OFF	OFF	ON
243	ON	ON	ON	ON	OFF	OFF	ON	ON

Table 7 (continued)

Table 7 (continued)

"SA01"								
SPECIAL VEND VALUE	SAT	FRI	THUR	WED	TUE	MON	SUN	ON/OFF
245	ON	ON	ON	ON	OFF	ON	OFF	ON
247	ON	ON	ON	ON	OFF	ON	ON	ON
249	ON	ON	ON	ON	ON	OFF	OFF	ON
251	ON	ON	ON	ON	ON	OFF	ON	ON
253	ON	ON	ON	ON	ON	ON	OFF	ON
255	ON	ON	ON	ON	ON	ON	ON	ON

Table 7

Programming Control

How to Program Special Vend A Start Hour “SA02”

This option allows the owner to set the hour that Special Vend A will begin.

1. Press the DELICATES (^) or the COLD (v) keypad to scroll through the programmable Special Vend A options until “SA02” appears in the display.
2. When “SA02” appears in the display, press the START (enter) keypad. The current start time (in military time) will appear in the display.

NOTE: The hours will be displayed in military time.

3. Press the DELICATES (^) or the COLD (v) keypad to increase or decrease the start hour to the desired hour.
4. Press the START (enter) keypad when the correct hour appears in the display. The next Special Vend A option, “SA03”, will appear in the display.

NOTE: To program “SA03” (Special Vend A Start Minute), continue to next Special Vend A option. To program other options, press the WARM (<) keypad and refer to the appropriate section.

How to Exit Programming Feature

Press the WARM (<) keypad until the control returns to Ready Mode.

How to Program Special Vend A Start Minute “SA03”

This option allows the owner to set the minute that Special Vend A will begin.

1. Press the DELICATES (^) or the COLD (v) keypad to scroll through the programmable Special Vend A options until “SA03” appears in the display.
2. When “SA03” appears in the display, press the START (enter) keypad. The current start minute will appear in the display.
3. Press the DELICATES (^) or the COLD (v) keypad to increase or decrease the start minute to the desired minute.
4. Press the START (enter) keypad when the correct minute appears in the display. The next Special Vend A option, “SA04”, will appear in the display.

NOTE: To program “SA04” (Special Vend A Length in Hours), continue to next Special Vend A option. To program other options, press the WARM (<) keypad and refer to the appropriate section.

How to Exit Programming Feature

Press the WARM (<) keypad until the control returns to Ready Mode.

How to Program Special Vend A Length in Hours “SA04”

This option allows the owner to set the length in hours for Special Vend A.

1. Press the DELICATES (^) or the COLD (v) keypad to scroll through the programmable Special Vend A options until “SA04” appears in the display.
2. When “SA04” appears in the display, press the START (enter) keypad. The current length in hours will appear in the display.
3. Press the DELICATES (^) or the COLD (v) keypad to increase or decrease the current length of hours to the desired number of hours.
4. Press the START (enter) keypad when the correct hour appears in the display. The next Special Vend A option, “SA05”, will appear in the display.

NOTE: To program “SA05” (Special Vend A Start Month), continue to next Special Vend A option. To program other options, press the WARM (<) keypad and refer to the appropriate section.

How to Exit Programming Feature

Press the WARM (<) keypad until the control returns to Ready Mode.

How to Program Special Vend A Start Month “SA05”

This option allows the owner to set the month that Special Vend A will begin.

NOTE: If Special Vend A Start Month, Start Date, End Month, or End Date are programmed to zero (default is zero), the Special Vend A will be active every week on the days programmed in Table 7.

1. Press the DELICATES (^) or the COLD (v) keypad to scroll through the programmable Special Vend A options until “SA05” appears in the display.
2. When “SA05” appears in the display, press the START (enter) keypad. The current start month will appear in the display.
3. Press the DELICATES (^) or the COLD (v) keypad to increase or decrease the start month to the desired month.

If “0” is selected and Special Vend A is on, Special Vend A will occur at the time and days of week selected, regardless of the month.

4. Press the START (enter) keypad when the correct month appears in the display. The next Special Vend A option, “SA06”, will appear in the display.

NOTE: To program “SA06” (Special Vend A Start Date), continue to next Special Vend A option. To program other options, press the WARM (<) keypad and refer to the appropriate section.

How to Exit Programming Feature

Press the WARM (<) keypad until the control returns to Ready Mode.

Programming Control

How to Program Special Vend A Start Date “SA06”

This option allows the owner to set the date that Special Vend A will begin.

1. Press the DELICATES (^) or the COLD (v) keypad to scroll through the programmable Special Vend A options until “SA06” appears in the display.
2. When “SA06” appears in the display, press the START (enter) keypad. The current start date will appear in the display.
3. Press the DELICATES (^) or the COLD (v) keypad to increase or decrease the start date to the desired date.

If “0” is selected and Special Vend A is on, Special Vend A will occur at the time and days of week selected, regardless of the date.

4. Press the START (enter) keypad when the correct date appears in the display. The next Special Vend A option, “SA07”, will appear in the display.

NOTE: To program “SA07” (Special Vend A Start Year), continue to next Special Vend A option. To program other options, press the WARM (<) keypad and refer to the appropriate section.

How to Exit Programming Feature

Press the WARM (<) keypad until the control returns to Ready Mode.

How to Program Special Vend A Start Year “SA07”

This option allows the owner to set the year that Special Vend A will begin.

1. Press the DELICATES (^) or the COLD (v) keypad to scroll through the programmable Special Vend A options until “SA07” appears in the display.
2. When “SA07” appears in the display, press the START (enter) keypad. The current start year will appear in the display.
3. Press the DELICATES (^) or the COLD (v) keypad to increase or decrease the start year to the desired year.

If the start/end date or month are set to “0”, the year is ignored. “1” is year 2001, “2” is year 2002, and so on.

4. Press the START (enter) keypad when the correct year appears in the display. The next Special Vend A option, “SA08”, will appear in the display.

NOTE: To program “SA08” (Special Vend A End Month), continue to next Special Vend A option. To program other options, press the WARM (<) keypad and refer to the appropriate section.

How to Exit Programming Feature

Press the WARM (<) keypad until the control returns to Ready Mode.

How to Program Special Vend A End Month “SA08”

This option allows the owner to set the month that Special Vend A will end.

1. Press the DELICATES (^) or the COLD (v) keypad to scroll through the programmable Special Vend A options until “SA08” appears in the display.
2. When “SA08” appears in the display, press the START (enter) keypad. The current end month will appear in the display.
3. Press the DELICATES (^) or the COLD (v) keypad to increase or decrease the end month to the desired month.

If “0” is selected and Special Vend A is on, Special Vend A will occur at the time and day of week selected, regardless of the month.

4. Press the START (enter) keypad when the correct month appears in the display. The next Special Vend A option, “SA09”, will appear in the display.

NOTE: To program “SA09” (Special Vend A End Date), continue to next Special Vend A option. To program other options, press the WARM (<) keypad and refer to the appropriate section.

How to Exit Programming Feature

Press the WARM (<) keypad until the control returns to Ready Mode.

How to Program Special Vend A End Date “SA09”

This option allows the owner to set the date that Special Vend A will end.

1. Press the DELICATES (^) or the COLD (v) keypad to scroll through the programmable Special Vend A options until “SA09” appears in the display.
2. When “SA09” appears in the display, press the START (enter) keypad. The current end date will appear in the display.
3. Press the DELICATES (^) or the COLD (v) keypad to increase or decrease the end date to the desired date.

If “0” is selected and Special Vend A is on, Special Vend A will occur at the time and days of week selected, regardless of the date.

4. Press the START (enter) keypad when the correct date appears in the display. The next Special Vend A option, “SA10”, will appear in the display.

NOTE: To program “SA10” (Special Vend A End Year), continue to next Special Vend A option. To program other options, press the WARM (<) keypad and refer to the appropriate section.

How to Exit Programming Feature

Press the WARM (<) keypad until the control returns to Ready Mode.

Programming Control

How to Program Special Vend A End Year “SA10”

This option allows the owner to set the year that Special Vend A will end.

1. Press the DELICATES (^) or the COLD (v) keypad to scroll through the programmable Special Vend A options until “SA10” appears in the display.
2. When “SA10” appears in the display, press the START (enter) keypad. The current end year will appear in the display.
3. Press the DELICATES (^) or the COLD (v) keypad to increase or decrease the end year to the desired year.

If the start/end date or month are set to “0”, the year is ignored. “1” is year 2001, “2” is year 2002 and so on.

4. Press the START (enter) keypad when the correct year appears in the display. The next Special Vend A option, “SA11”, will appear in the display.

NOTE: To program “SA11” (Special Vend A Vend Price #1), continue to next Special Vend A option. To program other options, press the WARM (<) keypad and refer to the appropriate section.

How to Exit Programming Feature

Press the WARM (<) keypad until the control returns to Ready Mode.

How to Program Special Vend A Vend Price #1 “SA11”

This option allows the owner to set the vend price for a normal/hot wash in Special Vend A. The corresponding LEDs will be lit while programming.

1. Press the DELICATES (^) or the COLD (v) keypad to scroll through the programmable Special Vend A options until “SA11” appears in the display.
2. When “SA11” appears in the display, press the START (enter) keypad. There are five digits in the Special Vend A Vend Price #1. The fifth digit will appear in the display and will flash one second on and one second off. Refer to *Figure 15*.

NOTE: If the vend price is 10000 or more, the fifth digit is “1-6”. If the vend price is 9999 or less, the fifth digit is “0”.

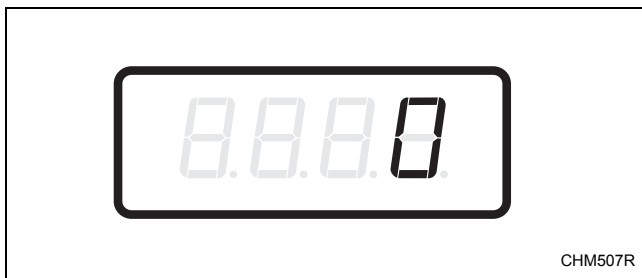


Figure 15

3. Press the DELICATES (^) or the COLD (v) keypad to increase or decrease the value of the fifth digit.

NOTE: The vend price can be set from 0 to 65,535.

4. Press the START (enter) keypad to enter the fifth digit and display remaining four digits. The active digit will flash one second on and one second off.

NOTE: To go back to the current programmable Special Vend A option without changing the value, press the WARM (<) keypad.

5. Press the DELICATES (^) or the COLD (v) keypad to increase or decrease the value of the active digit and the START keypad to enter the value of the digit and advance to the next digit.
6. Press the START (enter) keypad with the last active digit. The next Special Vend A option, “SA12”, will appear in the display.

NOTE: To program “SA12” (Special Vend A Vend Price #2), continue to next Special Vend A option. To program other options, press the WARM (<) keypad and refer to the appropriate section.

How to Exit Programming Feature

Press the WARM (<) keypad until the control returns to Ready Mode.

Programming Control

How to Program Special Vend A Vend Price #2 “SA12”

This option allows the owner to set the vend price for a normal/warm wash in Special Vend A. The corresponding LEDs will be lit while programming.

1. Press the DELICATES (^) or the COLD (v) keypad to scroll through the programmable Special Vend A options until “SA12” appears in the display.
2. When “SA12” appears in the display, press the START (enter) keypad. There are five digits in the Special Vend A Vend Price #2. The fifth digit will appear in the display and will flash one second on and one second off. Refer to *Figure 16*.

NOTE: If the vend price is 10000 or more, the fifth digit is “1-6”. If the vend price is 9999 or less, the fifth digit is “0”.

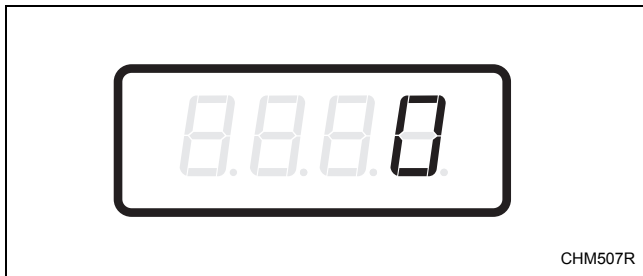


Figure 16

3. Press the DELICATES (^) or the COLD (v) keypad to increase or decrease the value of the fifth digit.

NOTE: The vend price can be set from 0 to 65,535.

4. Press the START (enter) keypad to enter the fifth digit and display remaining four digits. The active digit will flash one second on and one second off.

NOTE: To go back to the current programmable Special Vend A option without changing the value, press the WARM (<) keypad.

5. Press the DELICATES (^) or the COLD (v) keypad to increase or decrease the value of the active digit and the START keypad to enter the value of the digit and advance to the next digit.
6. Press the START (enter) keypad with the last active digit. The next Special Vend A option, “SA13”, will appear in the display.

NOTE: To program “SA13” (Special Vend A Vend Price #3), continue to next Special Vend A option. To program other options, press the WARM (<) keypad and refer to the appropriate section.

How to Exit Programming Feature

Press the WARM (<) keypad until the control returns to Ready Mode.

How to Program Special Vend A Vend Price #3 “SA13”

This option allows the owner to set the vend price for a normal/cold wash in Special Vend A. The corresponding LEDs will be lit while programming.

1. Press the DELICATES (^) or the COLD (v) keypad to scroll through the programmable Special Vend A options until “SA13” appears in the display.
2. When “SA13” appears in the display, press the START (enter) keypad. There are five digits in the Special Vend A Vend Price #3. The fifth digit will appear in the display and will flash one second on and one second off. Refer to *Figure 17*.

NOTE: If the vend price is 10000 or more, the fifth digit is “1-6”. If the vend price is 9999 or less, the fifth digit is “0”.

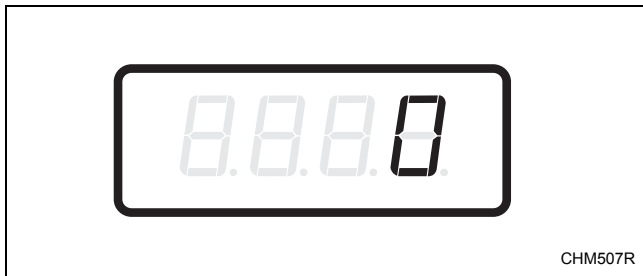


Figure 17

3. Press the DELICATES (^) or the COLD (v) keypad to increase or decrease the value of the fifth digit.

NOTE: The vend price can be set from 0 to 65,535.

4. Press the START (enter) keypad to enter the fifth digit and display remaining four digits. The active digit will flash one second on and one second off.

NOTE: To go back to the current programmable Special Vend A option without changing the value, press the WARM (<) keypad.

5. Press the DELICATES (^) or the COLD (v) keypad to increase or decrease the value of the active digit and the START keypad to enter the value of the digit and advance to the next digit.
6. Press the START (enter) keypad with the last active digit. The next Special Vend A option, “SA14”, will appear in the display.

NOTE: To program “SA14” (Special Vend A Vend Price #4), continue to next Special Vend A option. To program other options, press the WARM (<) keypad and refer to the appropriate section.

How to Exit Programming Feature

Press the WARM (<) keypad until the control returns to Ready Mode.

Programming Control

How to Program Special Vend A Vend Price #4 “SA14”

This option allows the owner to set the vend price for a perm press/hot wash in Special Vend A. The corresponding LEDs will be lit while programming.

1. Press the DELICATES (^) or the COLD (v) keypad to scroll through the programmable Special Vend A options until “SA14” appears in the display.
2. When “SA14” appears in the display, press the START (enter) keypad. There are five digits in the Special Vend A Vend Price #4. The fifth digit will appear in the display and will flash one second on and one second off. Refer to *Figure 18*.

NOTE: If the vend price is 10000 or more, the fifth digit is “1-6”. If the vend price is 9999 or less, the fifth digit is “0”.

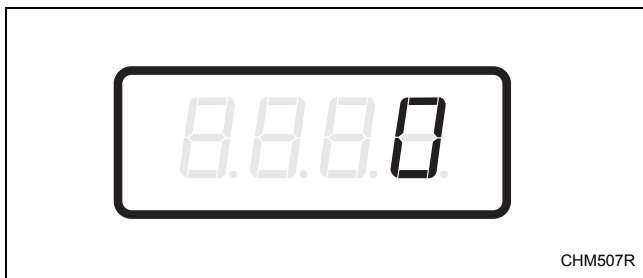


Figure 18

3. Press the DELICATES (^) or the COLD (v) keypad to increase or decrease the value of the fifth digit.

NOTE: The vend price can be set from 0 to 65,535.

4. Press the START (enter) keypad to enter the fifth digit and display remaining four digits. The active digit will flash one second on and one second off.

NOTE: To go back to the current programmable Special Vend A option without changing the value, press the WARM (<) keypad.

5. Press the DELICATES (^) or the COLD (v) keypad to increase or decrease the value of the active digit and the START keypad to enter the value of the digit and advance to the next digit.
6. Press the START (enter) keypad with the last active digit. The next Special Vend A option, “SA15”, will appear in the display.

NOTE: To program “SA15” (Special Vend A Vend Price #5), continue to next Special Vend A option. To program other options, press the WARM (<) keypad and refer to the appropriate section.

How to Exit Programming Feature

Press the WARM (<) keypad until the control returns to Ready Mode.

How to Program Special Vend A Vend Price #5 “SA15”

This option allows the owner to set the vend price for a perm press/warm wash in Special Vend A. The corresponding LEDs will be lit while programming.

1. Press the DELICATES (^) or the COLD (v) keypad to scroll through the programmable Special Vend A options until “SA15” appears in the display.
2. When “SA15” appears in the display, press the START (enter) keypad. There are five digits in the Special Vend A Vend Price #5. The fifth digit will appear in the display and will flash one second on and one second off. Refer to *Figure 19*.

NOTE: If the vend price is 10000 or more, the fifth digit is “1-6”. If the vend price is 9999 or less, the fifth digit is “0”.

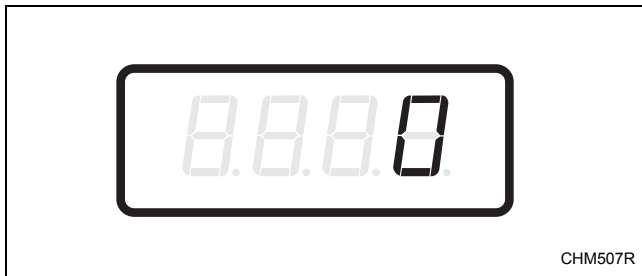


Figure 19

3. Press the DELICATES (^) or the COLD (v) keypad to increase or decrease the value of the fifth digit.

NOTE: The vend price can be set from 0 to 65,535.

4. Press the START (enter) keypad to enter the fifth digit and display remaining four digits. The active digit will flash one second on and one second off.

NOTE: To go back to the current programmable Special Vend A option without changing the value, press the WARM (<) keypad.

5. Press the DELICATES (^) or the COLD (v) keypad to increase or decrease the value of the active digit and the START keypad to enter the value of the digit and advance to the next digit.
6. Press the START (enter) keypad with the last active digit. The next Special Vend A option, “SA16”, will appear in the display.

NOTE: To program “SA16” (Special Vend A Vend Price #6), continue to next Special Vend A option. To program other options, press the WARM (<) keypad and refer to the appropriate section.

How to Exit Programming Feature

Press the WARM (<) keypad until the control returns to Ready Mode.

Programming Control

How to Program Special Vend A Vend Price #6 “SA16”

This option allows the owner to set the vend price for a perm press/cold wash in Special Vend A. The corresponding LEDs will be lit while programming.

1. Press the DELICATES (^) or the COLD (v) keypad to scroll through the programmable Special Vend A options until “SA16” appears in the display.
2. When “SA16” appears in the display, press the START (enter) keypad. There are five digits in the Special Vend A Vend Price #6. The fifth digit will appear in the display and will flash one second on and one second off. Refer to *Figure 20*.

NOTE: If the vend price is 10000 or more, the fifth digit is “1-6”. If the vend price is 9999 or less, the fifth digit is “0”.

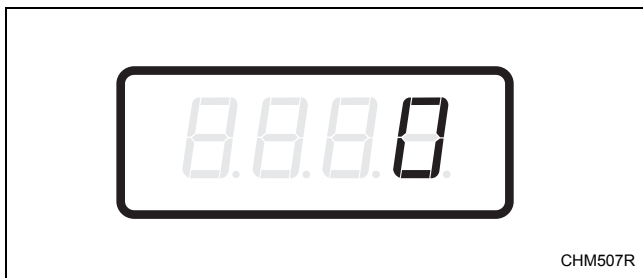


Figure 20

3. Press the DELICATES (^) or the COLD (v) keypad to increase or decrease the value of the fifth digit.

NOTE: The vend price can be set from 0 to 65,535.

4. Press the START (enter) keypad to enter the fifth digit and display remaining four digits. The active digit will flash one second on and one second off.

NOTE: To go back to the current programmable Special Vend A option without changing the value, press the WARM (<) keypad.

5. Press the DELICATES (^) or the COLD (v) keypad to increase or decrease the value of the active digit and the START keypad to enter the value of the digit and advance to the next digit.
6. Press the START (enter) keypad with the last active digit. The next Special Vend A option, “SA17”, will appear in the display.

NOTE: To program “SA17” (Special Vend A Vend Price #7), continue to next Special Vend A option. To program other options, press the WARM (<) keypad and refer to the appropriate section.

How to Exit Programming Feature

Press the WARM (<) keypad until the control returns to Ready Mode.

How to Program Special Vend A Vend Price #7 “SA17”

This option allows the owner to set the vend price for a delicate/hot wash in Special Vend A. The corresponding LEDs will be lit while programming.

1. Press the DELICATES (^) or the COLD (v) keypad to scroll through the programmable Special Vend A options until “SA17” appears in the display.
2. When “SA17” appears in the display, press the START (enter) keypad. There are five digits in the Special Vend A Vend Price #7. The fifth digit will appear in the display and will flash one second on and one second off. Refer to *Figure 21*.

NOTE: If the vend price is 10000 or more, the fifth digit is “1-6”. If the vend price is 9999 or less, the fifth digit is “0”.

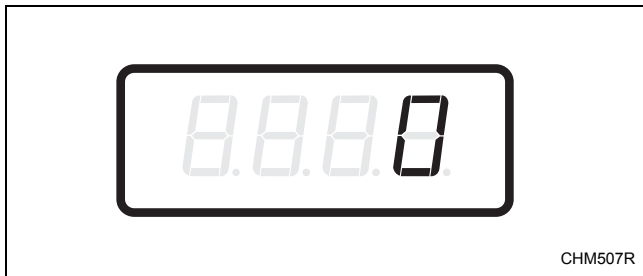


Figure 21

3. Press the DELICATES (^) or the COLD (v) keypad to increase or decrease the value of the fifth digit.

NOTE: The vend price can be set from 0 to 65,535.

4. Press the START (enter) keypad to enter the fifth digit and display remaining four digits. The active digit will flash one second on and one second off.

NOTE: To go back to the current programmable Special Vend A option without changing the value, press the WARM (<) keypad.

5. Press the DELICATES (^) or the COLD (v) keypad to increase or decrease the value of the active digit and the START keypad to enter the value of the digit and advance to the next digit.
6. Press the START (enter) keypad with the last active digit. The next Special Vend A option, “SA18”, will appear in the display.

NOTE: To program “SA18” (Special Vend A Vend Price #8), continue to next Special Vend A option. To program other options, press the WARM (<) keypad and refer to the appropriate section.

How to Exit Programming Feature

Press the WARM (<) keypad until the control returns to Ready Mode.

Programming Control

How to Program Special Vend A Vend Price #8 “SA18”

This option allows the owner to set the vend price for a delicate/warm wash in Special Vend A. The corresponding LEDs will be lit while programming.

1. Press the DELICATES (^) or the COLD (v) keypad to scroll through the programmable Special Vend A options until “SA18” appears in the display.
2. When “SA18” appears in the display, press the START (enter) keypad. There are five digits in the Special Vend A Vend Price #8. The fifth digit will appear in the display and will flash one second on and one second off. Refer to *Figure 22*.

NOTE: If the vend price is 10000 or more, the fifth digit is “1-6”. If the vend price is 9999 or less, the fifth digit is “0”.

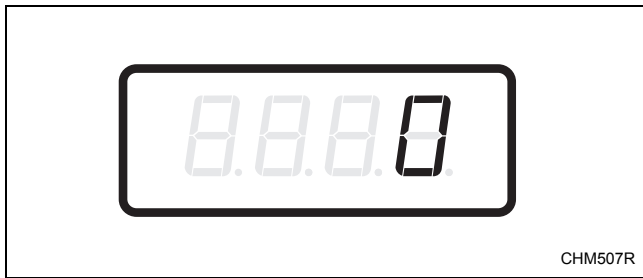


Figure 22

3. Press the DELICATES (^) or the COLD (v) keypad to increase or decrease the value of the fifth digit.

NOTE: The vend price can be set from 0 to 65,535.

4. Press the START (enter) keypad to enter the fifth digit and display remaining four digits. The active digit will flash one second on and one second off.

NOTE: To go back to the current programmable Special Vend A option without changing the value, press the WARM (<) keypad.

5. Press the DELICATES (^) or the COLD (v) keypad to increase or decrease the value of the active digit and the START keypad to enter the value of the digit and advance to the next digit.
6. Press the START (enter) keypad with the last active digit. The next Special Vend A option, “SA19”, will appear in the display.

NOTE: To program “SA19” (Special Vend A Vend Price #9), continue to next Special Vend A option. To program other options, press the WARM (<) keypad and refer to the appropriate section.

How to Exit Programming Feature

Press the WARM (<) keypad until the control returns to Ready Mode.

How to Program Special Vend A Vend Price #9 “SA19”

This option allows the owner to set the vend price for a delicate/cold wash in Special Vend A. The corresponding LEDs will be lit while programming.

1. Press the DELICATES (^) or the COLD (v) keypad to scroll through the programmable Special Vend A options until “SA19” appears in the display.
2. When “SA19” appears in the display, press the START (enter) keypad. There are five digits in the Special Vend A Vend Price #9. The fifth digit will appear in the display and will flash one second on and one second off. Refer to *Figure 23*.

NOTE: If the vend price is 10000 or more, the fifth digit is “1-6”. If the vend price is 9999 or less, the fifth digit is “0”.

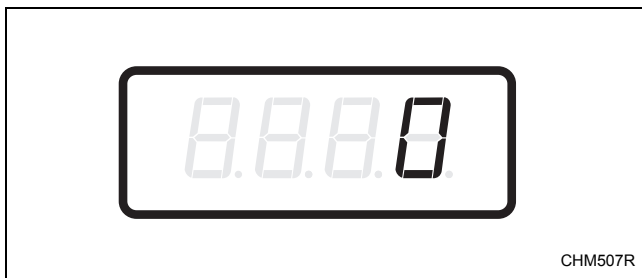


Figure 23

3. Press the DELICATES (^) or the COLD (v) keypad to increase or decrease the value of the fifth digit.

NOTE: The vend price can be set from 0 to 65,535.

4. Press the START (enter) keypad to enter the fifth digit and display remaining four digits. The active digit will flash one second on and one second off.

NOTE: To go back to the current programmable Special Vend A option without changing the value, press the WARM (<) keypad.

5. Press the DELICATES (^) or the COLD (v) keypad to increase or decrease the value of the active digit and the START keypad to enter the value of the digit and advance to the next digit.
6. Press the START (enter) keypad with the last active digit. The next Special Vend A option, “SA20”, will appear in the display.

NOTE: To program “SA20” (Special Vend A Added Wash Agitate Time), continue to next Special Vend A option. To program other options, press the WARM (<) keypad and refer to the appropriate section.

How to Exit Programming Feature

Press the WARM (<) keypad until the control returns to Ready Mode.

Programming Control

How to Program Special Vend A Added Wash Agitate Time “SA20”

This option allows the owner to add time to the wash agitate part of the cycle in Special Vend A.

1. Press the DELICATES (^) or the COLD (v) keypad to scroll through the programmable Special Vend A options until “SA20” appears in the display.
2. When “SA20” appears in the display, press the START (enter) keypad.
3. Press the DELICATES (^) or the COLD (v) keypad to increase or decrease the number of minutes displayed to the desired number of added minutes.

NOTE: The Special Vend A Added Wash Agitate Time can be set from zero “0” to ten “10” minutes.

4. Press the START (enter) keypad when the correct number of minutes appears in the display. The next Special Vend A option, “SA21”, will appear in the display.

NOTE: To program “SA21” (Special Vend A Subtracted Wash Agitate Time), continue to next Special Vend A option. To program other options, press the WARM (<) keypad and refer to the appropriate section.

How to Exit Programming Feature

Press the WARM (<) keypad until the control returns to Ready Mode.

How to Program Special Vend A Subtracted Wash Agitate Time “SA21”

This option allows the owner to subtract time from the wash agitate part of the cycle in Special Vend A.

1. Press the DELICATES (^) or the COLD (v) keypad to scroll through the programmable Special Vend A options until “SA21” appears in the display.
2. When “SA21” appears in the display, press the START (enter) keypad.
3. Press the DELICATES (^) or the COLD (v) keypad to increase or decrease the number of minutes displayed to the desired number of subtracted minutes.

NOTE: The Special Vend A Subtracted Wash Agitate Time can be set from zero “0” to ten “10” minutes.

4. Press the START (enter) keypad when the correct number of minutes appears in the display. The next Special Vend A option, “SA01”, will appear in the display.

NOTE: To program “SPb-” (Special Vend B Enable), press the WARM (<) keypad and refer to *option 22*. To program other options, refer to the appropriate section.

How to Exit Programming Feature

Press the WARM (<) keypad until the control returns to Ready Mode.

22. Special Vend B Days Enable “SPb-”

This option allows the owner to set the day or days of a second special vend.

Special Vend B can be programmed using an external device or network.

The owner may also turn the Special Vend B option on or off if desired.

How to Program Special Vend B Days Enable

1. Control must be in Manual Mode. Refer to *Entering the Manual Mode*.
2. Press the DELICATES (^) or the COLD (v) keypad until “Prog” appears in the display. Press the START (enter) keypad and “AtS1” will appear in the display.
3. Press the DELICATES (^) or the COLD (v) keypad to scroll through the programmable options until “SPb-” appears in the display.
4. When “SPb-” appears in the display, press the START (enter) keypad. The current Special Vend B Days Enable status will appear in the display.
 “on” = Option Enabled
 “oFF” = Option Disabled
 (factory default setting)

5. Press the DELICATES (^) or the COLD (v) keypad to change the current status.
6. Press the START (enter) keypad when the desired status appears in the display. The next option, “SPC-”, will appear in the display.

NOTE: To program “SPC-” (Special Vend C Days Enable), refer to *option 23*. To program other options, refer to the appropriate section.

How to Exit Programming Feature

Press the WARM (<) keypad until the control returns to Ready Mode.

Programming Control

23. Special Vend C Days Enable “SPC-”

This option allows the owner to set the day or days of a third special vend.

Special Vend C can be programmed using an external device or network.

The owner may also turn the Special Vend C option on or off if desired.

How to Program Special Vend C Days Enable

1. Control must be in Manual Mode. Refer to *Entering the Manual Mode*.
2. Press the DELICATES (^) or the COLD (v) keypad until “Prog” appears in the display. Press the START (enter) keypad and “AtS1” will appear in the display.
3. Press the DELICATES (^) or the COLD (v) keypad to scroll through the programmable options until “SPC-” appears in the display.
4. When “SPC-” appears in the display, press the START (enter) keypad. The current Special Vend C Days Enable status will appear in the display.
“on” = Option Enabled
“OFF” = Option Disabled
(factory default setting)

5. Press the DELICATES (^) or the COLD (v) keypad to change the current status.
6. Press the START (enter) keypad when the desired status appears in the display. The next option, “SPd-”, will appear in the display.

NOTE: To program “SPd-” (Special Vend D Days Enable), refer to *option 24*. To program other options, refer to the appropriate section.

How to Exit Programming Feature

Press the WARM (<) keypad until the control returns to Ready Mode.

24. Special Vend D Days Enable “SPd-”

This option allows the owner to set the day or days of a fourth special vend.

Special Vend D can be programmed using an external device or network.

The owner may also turn the Special Vend D option on or off if desired.

How to Program Special Vend D Days Enable

1. Control must be in Manual Mode. Refer to *Entering the Manual Mode*.
2. Press the DELICATES (^) or the COLD (v) keypad until “Prog” appears in the display. Press the START (enter) keypad and “AtS1” will appear in the display.
3. Press the DELICATES (^) or the COLD (v) keypad to scroll through the programmable options until “SPd-” appears in the display.
4. When “SPd-” appears in the display, press the START (enter) keypad. The current Special Vend D Days Enable status will appear in the display.
 “on” = Option Enabled
 “oFF” = Option Disabled
 (factory default setting)

5. Press the DELICATES (^) or the COLD (v) keypad to change the current status.
6. Press the START (enter) keypad when the desired status appears in the display. The next option, “CnP-”, will appear in the display.

NOTE: To program “CnP-” (Cycle Modifier Programming), refer to *option 25*. To program other options, refer to the appropriate section.

How to Exit Programming Feature

Press the WARM (<) keypad until the control returns to Ready Mode.

Programming Control

25. Cycle Modifier Programming “CnP-”

This option allows the owner to program the machine to offer extra wash time, extra rinse time, warm rinse, or any combination of these to the customer for an added vend price. This option is activated when HEAVY is selected using the SOIL LEVEL keypad.

How to Program Heavy Cycle Selection Vend Price “CnP1”

1. Control must be in Manual Mode. Refer to *Entering the Manual Mode*.
2. Press the DELICATES (^) or the COLD (v) keypad until “Prog” appears in the display. Press the START (enter) keypad and “AtS1” will appear in the display.
3. Press the DELICATES (^) or the COLD (v) keypad to scroll through the programmable options until “CnP-” appears in the display. Press the START (enter) keypad and “CnP1” will appear in the display.
4. When “CnP1” appears in the display, press the START (enter) keypad. There are five digits in the Heavy Cycle Selection Vend Price. The fifth digit will appear in the display and will flash for one second on, one second off. Refer to *Figure 24*.

NOTE: If the vend price is 10000 or more, the fifth digit is “1-6”. If the vend price is 9999 or less, the fifth digit is “0”.

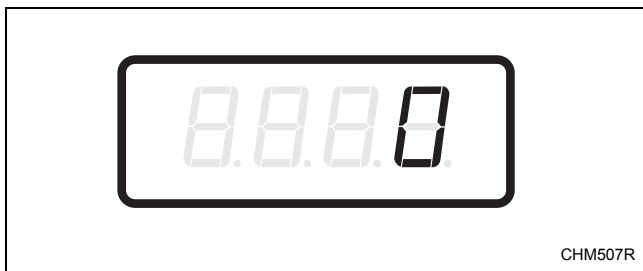


Figure 24

5. Press the DELICATES (^) or the COLD (v) keypad to increase or decrease the value of the fifth digit.

NOTE: The vend price can be set from 1 to 65,535. The factory default setting is 25.

6. Press the START (enter) keypad to enter the fifth digit and display remaining four digits. The active digit will flash one second on and one second off.

NOTE: To go back to the current programmable option without changing the value, press the WARM (<) keypad.

7. Press the DELICATES (^) or the COLD (v) keypad to increase or decrease the value of the active digit and the START (enter) keypad to enter the value of the digit and advance to the next digit.
8. Press the START (enter) keypad with the last active digit. The next Cycle Modifier option, “CnP2”, will appear in the display.

NOTE: To program “CnP2” (Heavy Cycle Selection Option), continue to next Cycle Modifier option. To program other options, press the WARM (<) keypad and refer to the appropriate section.

How to Exit Programming Feature

Press the WARM (<) keypad until the control returns to Ready Mode.

How to Program Heavy Cycle Selection Option “CnP2”

This option allows the owner to enable or disable the Heavy Cycle Selection option.

1. Press the DELICATES (^) or the COLD (v) keypad to scroll through the programmable Cycle Modifier options until “CnP2” appears in the display.
2. When “CnP2” appears in the display, press the START (enter) keypad. The current status will appear in the display. “ON” (factory default setting) indicates the Heavy Cycle Selection option is enabled. “OFF” indicates this option is disabled.
3. Press the DELICATES (^) or the COLD (v) keypad to change the status.
4. Press the START (enter) keypad when the desired status appears in the display. The next Cycle Modifier option, “CnP3”, will appear in the display.

NOTE: To program “CnP3” (Heavy Cycle Selection Extra Wash Time), continue to next Cycle Modifier option. To program other options, press the WARM (<) keypad and refer to the appropriate section.

How to Exit Programming Feature

Press the WARM (<) keypad until the control returns to Ready Mode.

How to Program Heavy Cycle Selection Extra Wash Time “CnP3”

This option allows the owner to set the amount of additional wash agitate time for the Heavy Cycle Selection.

1. Press the DELICATES (^) or the COLD (v) keypad to scroll through the programmable Cycle Modifier options until “CnP3” appears in the display.
2. When “CnP3” appears in the display, press the START (enter) keypad. The current number of minutes set for the Heavy Cycle Selection Extra Wash Time will appear in the display.
3. Press the DELICATES (^) or the COLD (v) keypad to increase or decrease the current number of minutes displayed in the display to the desired number of minutes.

NOTE: The Heavy Cycle Selection Extra Wash Time can be set from zero (0) to ten (10) minutes. The factory default setting is two (2).

4. Press the START (enter) keypad when the desired number of minutes appears in the display. The next Cycle Modifier option, “CnP4”, will appear in the display.

NOTE: The Heavy Cycle Selection option needs to be turned on (refer to Heavy Cycle Selection option) for the Heavy Cycle Selection Extra Wash Time to take effect.

NOTE: To program “CnP4” (Heavy Cycle Selection Extra Extra Rinse Time), continue to next Cycle Modifier option. To program other options, press the WARM (<) keypad and refer to the appropriate section.

How to Exit Programming Feature

Press the WARM (<) keypad until the control returns to Ready Mode.

Programming Control

How to Program Heavy Cycle Selection Extra Rinse Time “CnP4”

This option allows the owner to set the amount of additional time for the extra rinse for the Heavy Cycle Selection.

1. Press the DELICATES (^) or the COLD (v) keypad to scroll through the programmable Cycle Modifier options until “CnP4” appears in the display.
2. When “CnP4” appears in the display, press the START (enter) keypad. The current number of minutes set for the Heavy Cycle Selection Extra Rinse Time will appear in the display.
3. Press the DELICATES (^) or the COLD (v) keypad to increase or decrease the current number of minutes shown in the display to the desired number of minutes.

NOTE: The Heavy Cycle Selection Extra Rinse Time can be set from zero (0) to ten (10) minutes. The factory default setting is zero (0).

4. Press the START (enter) keypad when the correct number of minutes appears in the display. The next option, “CnP5”, will appear in the display.

NOTE: The Heavy Cycle Selection option needs to be turned on (refer to Heavy Cycle Selection option) for the Heavy Cycle Selection Extra Rinse Time to take effect.

NOTE: To program “CnP5” (Heavy Cycle Selection Warm Rinse option), continue to next Cycle Modifier option. To program other options, press the WARM (<) keypad and refer to the appropriate section.

How to Exit Programming Feature

Press the WARM (<) keypad until the control returns to Ready Mode.

How to Program Heavy Cycle Selection Warm Rinse Option “CnP5”

This option allows the owner to program an optional warm fill temperature for the final rinse fill of the Heavy Cycle Selection. If this option is enabled and HOT or WARM water is selected for the wash fill, warm water will be used for the final rinse fill.

1. Press the DELICATES (^) or the COLD (v) keypad to scroll through the programmable options until “CnP5” appears in the display.
2. When “CnP5” appears in the display, press the START (enter) keypad. The current Heavy Cycle Selection Warm Rinse Option status will appear in the display.
“ON” = Option Enabled
“OFF” = Option Disabled
(factory default setting)
3. Press the DELICATES (^) or the COLD (v) keypad to change the current status.
4. Press the START (enter) keypad when the desired status appears in the display. The next Cycle Modifier option, “CnP6” will appear in the display.

NOTE: To program “CnP6” (Default Cycle Modifier), continue to the next Cycle Modifier option. To program other options, press the WARM (<) keypad and refer to the appropriate section.

How to Exit Programming Feature

Press the WARM (<) keypad until the control returns to Ready Mode.

How to Program Default Cycle Modifier “CnP6”

This option allows the owner to set the Default Cycle Modifier.

1. Press the DELICATES (^) or the COLD (v) keypad to scroll through the programmable options until “CnP6” appears in the display.
2. When “CnP6” appears in the display, press the START (enter) keypad. A number will appear in the display. This number corresponds to the current Default Cycle Modifier. Refer to *Table 8*.
3. Press the DELICATES (^) or the COLD (v) keypad to increase or decrease the current number to the desired number selected from *Table 8*.
4. Press the START (enter) keypad when the desired number appears in the display. The next Cycle Modifier option, “CnP1”, will appear in the display.

NOTE: To program “CP--” (Cycle Programming), press the WARM (<) keypad to return to the main programming options list and refer to *option 26*. To program other options, refer to the appropriate section.

How to Exit Programming Feature

Press the WARM (<) keypad until the control returns to Ready Mode.

“CnP6”	
Default Value	Cycle Modifier
0	Small Load
*1	Light/Medium
2	Heavy

*Factory default setting.

Table 8

Programming Control

26. Cycle Programming “CP--”

This option allows the owner to set the amount of time for various steps in each type of cycle.

How to Program Normal Wash Agitate Time “CP1”

This option allows the owner to set the amount of wash agitate time for the Normal Cycle.

1. Control must be in Manual Mode. Refer to *Entering the Manual Mode*.
2. Press the DELICATES (^) or the COLD (v) keypad until “Prog” appears in the display. Press the START (enter) keypad and “AtS1” will appear in the display.
3. Press the DELICATES (^) or the COLD (v) keypad to scroll through the programmable options until “CP--” appears in the display. Press the START (enter) keypad and “CP1” will appear in the display.
4. When “CP1” appears in the display, press the START (enter) keypad. The current number of minutes set for the Normal Wash Agitate Time will appear in the display.
5. Press the DELICATES (^) or the COLD (v) keypad to increase or decrease the current number of minutes shown in the display to the desired number of minutes.

NOTE: The Normal Wash Agitate Time can be set from zero (0) to ten (10) minutes. If the Normal Wash Agitate Time is set to zero (0), the step is skipped. The factory default setting is ten (10).

6. Press the START (enter) keypad when the correct number of minutes appears in the display. The next Cycle Programming option, “CP2”, will appear in the display.

NOTE: To program “CP2” (Normal Extra Rinse Agitate Time), continue to next Cycle Programming option. To program other options, press the WARM (<) keypad and refer to the appropriate section.

How to Exit Programming Feature

Press the WARM (<) keypad until the control returns to Ready Mode.

How to Program Normal Extra Rinse Agitate Time “CP2”

This option allows the owner to set the amount of extra rinse agitate time for the Normal Cycle.

1. Press the DELICATES (^) or the COLD (v) keypad to scroll through the programmable Cycle Programming options until “CP2” appears in the display.
2. When “CP2” appears in the display, press the START (enter) keypad. The current number of minutes set for the Normal Extra Rinse Agitate Time will appear in the display.
3. Press the DELICATES (^) or the COLD (v) keypad to increase or decrease the current number of minutes shown in the display to the desired number of minutes.

NOTE: The Normal Extra Rinse Agitate Time can be set from zero (0) to ten (10) minutes. The factory default setting is zero (0).

4. Press the START (enter) keypad when the correct number of minutes appears in the display. The next Cycle Programming option, “CP4”, will appear in the display.

NOTE: To program “CP4” (Normal Final Spin Time), continue to next Cycle Programming option. To program other options, press the WARM (<) keypad and refer to the appropriate section.

How to Exit Programming Feature

Press the WARM (<) keypad until the control returns to Ready Mode.

How to Program Normal Final Spin Time “CP4”

This option allows the owner to set the amount of time for a final spin in the Normal Cycle.

1. Press the DELICATES (^) or the COLD (v) keypad to scroll through the programmable Cycle Programming options until “CP4” appears in the display.
2. When “CP4” appears in the display, press the START (enter) keypad. The current number of minutes set for the Normal Final Spin Time will appear in the display.
3. Press the DELICATES (^) or the COLD (v) keypad to increase or decrease the current number of minutes shown in the display to the desired number of minutes.

NOTE: The Normal Final Spin Time can be set from zero (0) to ten (10) minutes. The factory default setting is seven (7).

4. Press the START (enter) keypad when the correct number of minutes appears in the display. The next Cycle Programming option, “CP5”, will appear in the display.

NOTE: To program “CP5” (Permanent Press Wash Agitate Time), continue to next Cycle Programming option. To program other options, press the WARM (<) keypad and refer to the appropriate section.

How to Exit Programming Feature

Press the WARM (<) keypad until the control returns to Ready Mode.

How to Program Permanent Press Wash Agitate Time “CP5”

This option allows the owner to set the amount of wash agitate time for the Permanent Press cycle.

1. Press the DELICATES (^) or the COLD (v) keypad to scroll through the programmable Cycle Programming options until “CP5” appears in the display.
2. When “CP5” appears in the display, press the START (enter) keypad. The current number of minutes set for the Permanent Press Wash Agitate Time will appear in the display.
3. Press the DELICATES (^) or the COLD (v) keypad to increase or decrease the current number of minutes shown in the display to the desired number of minutes.

NOTE: The Permanent Press Wash Agitate Time can be set from zero (0) to ten (10) minutes. The factory default setting is ten (10).

4. Press the START (enter) keypad when the correct number of minutes appears in the display. The next Cycle Programming option, “CP6”, will appear in the display.

NOTE: To program “CP6” (Permanent Press Extra Rinse Agitate Time), continue to next Cycle Programming option. To program other options, press the WARM (<) keypad and refer to the appropriate section.

How to Exit Programming Feature

Press the WARM (<) keypad until the control returns to Ready Mode.

Programming Control

How to Program Permanent Press Extra Rinse Agitate Time “CP6”

This option allows the owner to set the amount of extra rinse agitate time for the Permanent Press cycle.

1. Press the DELICATES (^) or the COLD (v) keypad to scroll through the programmable Cycle Programming options until “CP6” appears in the display.
2. When “CP6” appears in the display, press the START (enter) keypad. The current number of minutes set for the Permanent Press Extra Rinse Agitate Time will appear in the display.
3. Press the DELICATES (^) or the COLD (v) keypad to increase or decrease the current number of minutes shown in the display to the desired number of minutes.

NOTE: The Permanent Press Extra Rinse Agitate Time can be set from zero (0) to ten (10) minutes. The factory default setting is zero (0).

4. Press the START (enter) keypad when the correct number of minutes appears in the display. The next Cycle Programming option, “CP8”, will appear in the display.

NOTE: To program “CP8” (Permanent Press Final Spin Time), continue to next Cycle Programming option. To program other options, press the WARM (<) keypad and refer to the appropriate section.

How to Exit Programming Feature

Press the WARM (<) keypad until the control returns to Ready Mode.

How to Program Permanent Press Final Spin Time “CP8”

This option allows the owner to set the amount of final spin time for the Permanent Press cycle.

1. Press the DELICATES (^) or the COLD (v) keypad to scroll through the programmable Cycle Programming options until “CP8” appears in the display.
2. When “CP8” appears in the display, press the START (enter) keypad. The current number of minutes set for the Permanent Press Final Spin Time will appear in the display.
3. Press the DELICATES (^) or the COLD (v) keypad to increase or decrease the current number of minutes shown in the display to the desired number of minutes.

NOTE: The Permanent Press Final Spin Time can be set from zero (0) to ten (10) minutes. The factory default setting is six (6).

4. Press the START (enter) keypad when the correct number of minutes appears in the display. The next Cycle Programming option, “CP9”, will appear in the display.

NOTE: To program “CP9” (Delicate Wash Agitate Time), continue to next Cycle Programming option. To program other options, press the WARM (<) keypad and refer to the appropriate section.

How to Exit Programming Feature

Press the WARM (<) keypad until the control returns to Ready Mode.

How to Program Delicate Wash Agitate Time “CP9”

This option allows the owner to set the amount of wash agitate time for the Delicate cycle.

1. Press the DELICATES (^) or the COLD (v) keypad to scroll through the programmable Cycle Programming options until “CP9” appears in the display.
2. When “CP9” appears in the display, press the START (enter) keypad. The current number of minutes set for the Delicate Wash Agitate Time will appear in the display.
3. Press the DELICATES (^) or the COLD (v) keypad to increase or decrease the current number of minutes shown in the display to the desired number of minutes.

NOTE: The Delicate Wash Agitate Time can be set from zero (0) to ten (10) minutes. The factory default setting is ten (10).

4. Press the START (enter) keypad when the correct number of minutes appears in the display. The next Cycle Programming option, “CP10”, will appear in the display.

NOTE: To program “CP10” (Delicate Extra Rinse Agitate Time), continue to next Cycle Programming option. To program other options, press the WARM (<) keypad and refer to the appropriate section.

How to Exit Programming Feature

Press the WARM (<) keypad until the control returns to Ready Mode.

How to Program Delicate Extra Rinse Agitate Time “CP10”

This option allows the owner to set the amount of extra rinse agitate time for the Delicate cycle.

1. Press the DELICATES (^) or the COLD (v) keypad to scroll through the programmable Cycle Programming options until “CP10” appears in the display.
2. When “CP10” appears in the display, press the START (enter) keypad. The current number of minutes set for the Delicate Extra Rinse Agitate Time will appear in the display.
3. Press the DELICATES (^) or the COLD (v) keypad to increase or decrease the current number of minutes shown in the display to the desired number of minutes.

NOTE: The Delicate Extra Rinse Agitate Time can be set from zero (0) to ten (10) minutes. The factory default setting is zero (0).

4. Press the START (enter) keypad when the correct number of minutes appears in the display. The next Cycle Programming option, “CP12”, will appear in the display.

NOTE: To program “CP12” (Delicate Final Spin Time), continue to next Cycle Programming option. To program other options, press the WARM (<) keypad and refer to the appropriate section.

How to Exit Programming Feature

Press the WARM (<) keypad until the control returns to Ready Mode.

Programming Control

How to Program Delicate Final Spin Time “CP12”

This option allows the owner to set the amount of final spin time for the Delicate cycle.

1. Press the DELICATES (^) or the COLD (v) keypad to scroll through the programmable Cycle Programming options until “CP12” appears in the display.
2. When “CP12” appears in the display, press the START (enter) keypad. The current number of minutes set for the Delicate Final Spin Time will appear in the display.
3. Press the DELICATES (^) or the COLD (v) keypad to increase or decrease the current number of minutes shown in the display to the desired number of minutes.

NOTE: The Delicate Final Spin Time can be set from zero (0) to ten (10) minutes. The factory default setting is five (5).

4. Press the START (enter) keypad when the correct number of minutes appears in the display. The next Cycle Programming option, “CP13”, will appear in the display.

NOTE: To program “CP13” (Warm Rinse Option), continue to next Cycle Programming option. To program other options, press the WARM (<) keypad and refer to the appropriate section.

How to Exit Programming Feature

Press the WARM (<) keypad until the control returns to Ready Mode.

How to Program Warm Rinse Option “CP13”

This option allows the owner to program an optional warm fill temperature for the final rinse fill. If this option is enabled and HOT or WARM water is selected for the wash fill, warm water will be used for the final rinse fill.

1. Press the DELICATES (^) or the COLD (v) keypad to scroll through the programmable Cycle Programming options until “CP13” appears in the display.
2. When “CP13” appears in the display, press the START (enter) keypad. The current Warm Rinse Option status will appear in the display.
“ON” = Option Enabled
“OFF” = Option Disabled
(factory default setting)
3. Press the DELICATES (^) or the COLD (v) keypad to change the current status.
4. Press the START (enter) keypad when the desired status appears in the display. The next Cycle Programming option, “CP1”, will appear in the display.

NOTE: To program “drop” (Drop Off Mode), press the WARM (<) keypad and refer to *option 27*. To program other options, refer to the appropriate section.

How to Exit Programming Feature

Press the WARM (<) keypad until the control returns to Ready Mode.

27. Drop Off Mode (On/Off) “droP”

This option allows the owner to limit machine use to an attendant without requiring vend.

How to Program the Drop Off Mode (On/Off)

1. Control must be in Manual Mode. Refer to *Entering the Manual Mode*.
2. Press the DELICATES (^) or the COLD (v) keypad until “Prog” appears in the display. Press the START (enter) keypad and “AtS1” will appear in the display.
3. Press the DELICATES (^) or the COLD (v) keypad to scroll through the programmable options until “droP” appears in the display.
4. When “droP” appears in the display, press the START (enter) keypad. The current Drop Off Mode (On/Off) Status will appear in the display.
“on” = Option Enabled
“oFF” = Option Disabled
(factory default setting)
5. When the Drop Off Mode is enabled, starting the machine requires the correct sequence of four keypad presses. The default sequence programmed at the factory is NORMAL, PERM PRESS, DELICATE, CYCLE SELECT.
6. Press the DELICATES (^) or the COLD (v) keypad to change the current status.
7. Press the START (enter) keypad when the desired status appears in the display. The next option, “LPSA”, will appear in the display.

NOTE: To program “LPSA” (Low Power/Auto Shutdown A Days Enable), refer to *option 28*. To program other options, refer to the appropriate section.

How to Exit Programming Feature

Press the WARM (<) keypad until the control returns to Ready Mode.

28. Low Power/Auto Shutdown A Days Enable “LPSA”

This option allows the owner to set Low Power/Auto Shutdown on certain day(s) of the week. Low Power or Auto Shutdown duration are programmed using an external device or network.

How to Program the Low Power/Auto Shutdown A Days Enable

1. Control must be in Manual Mode. Refer to *Entering the Manual Mode*.
2. Press the DELICATES (^) or the COLD (v) keypad until “Prog” appears in the display. Press the START (enter) keypad and “AtS1” will appear in the display.
3. Press the DELICATES (^) or the COLD (v) keypad to scroll through the programmable options until “LPSA” appears in the display.
4. When “LPSA” appears in the display, press the START (enter) keypad. The current Low Power/Auto Shutdown A Days Enable status will appear in the display.
“on” = Option Enabled
“oFF” = Option Disabled
(factory default setting)
5. Press the DELICATES (^) or the COLD (v) keypad to change the current status.
6. Press the START (enter) keypad when the correct status appears in the display. The next option, “LPSb”, will appear in the display.

NOTE: To program “LPSb” (Low Power/Auto Shutdown B Days Enable), refer to *option 29*. To program other options, refer to the appropriate section.

How to Exit Programming Feature

Press the WARM (<) keypad until the control returns to Ready Mode.

29. Low Power/Auto Shutdown B Days Enable “LPSb”

This option allows the owner to set Low Power/Auto Shutdown on certain day(s) of the week. Low Power or Auto Shutdown duration are programmed using an external device or network.

How to Program the Low Power/Auto Shutdown B Days Enable

1. Control must be in Manual Mode. Refer to *Entering the Manual Mode*.
2. Press the DELICATES (^) or the COLD (v) keypad until “Prog” appears in the display. Press the START (enter) keypad and “AtS1” will appear in the display.
3. Press the DELICATES (^) or the COLD (v) keypad to scroll through the programmable options until “LPSb” appears in the display.
4. When “LPSb” appears in the display, press the START (enter) keypad. The current Low Power/Auto Shutdown B Days Enable status will appear in the display.
“on” = Option Enabled
“oFF” = Option Disabled
(factory default setting)
5. Press the DELICATES (^) or the COLD (v) keypad to change the current status.
6. Press the START (enter) keypad when the correct status appears in the display. The next option, “LPSC”, will appear in the display.

NOTE: To program “LPSC” (Low Power/Auto Shutdown C Days Enable), refer to *option 30*. To program other options, refer to the appropriate section.

How to Exit Programming Feature

Press the WARM (<) keypad until the control returns to Ready Mode.

30. Low Power/Auto Shutdown C Days Enable “LPSC”

This option allows the owner to set Low Power/Auto Shutdown on certain day(s) of the week. Low Power or Auto Shutdown duration are programmed using an external device or network.

How to Program the Low Power/Auto Shutdown C Days Enable

1. Control must be in Manual Mode. Refer to *Entering the Manual Mode*.
2. Press the DELICATES (^) or the COLD (v) keypad until “Prog” appears in the display. Press the START (enter) keypad and “AtS1” will appear in the display.
3. Press the DELICATES (^) or the COLD (v) keypad to scroll through the programmable options until “LPSC” appears in the display.
4. When “LPSC” appears in the display, press the START (enter) keypad. The current Low Power/Auto Shutdown C Days Enable status will appear in the display.
“on” = Option Enabled
“oFF” = Option Disabled
(factory default setting)
5. Press the DELICATES (^) or the COLD (v) keypad to change the current status.
6. Press the START (enter) keypad when the correct status appears in the display. The next option, “LPSd”, will appear in the display.

NOTE: To program “LPSd” (Low Power/Auto Shutdown D Days Enable), refer to *option 31*. To program other options, refer to the appropriate section.

How to Exit Programming Feature

Press the WARM (<) keypad until the control returns to Ready Mode.

31. Low Power/Auto Shutdown D Days Enable “LPSd”

This option allows the owner to set Low Power/Auto Shutdown on certain day(s) of the week. Low Power or Auto Shutdown duration are programmed using an external device or network.

How to Program the Low Power/Auto Shutdown D Days Enable

1. Control must be in Manual Mode. Refer to *Entering the Manual Mode*.
2. Press the DELICATES (^) or the COLD (v) keypad until “Prog” appears in the display. Press the START (enter) keypad and “AtS1” will appear in the display.
3. Press the DELICATES (^) or the COLD (v) keypad to scroll through the programmable options until “LPSd” appears in the display.
4. When “LPSd” appears in the display, press the START (enter) keypad. The current Low Power/Auto Shutdown D Days Enable status will appear in the display.
 “on” = Option Enabled
 “oFF” = Option Disabled
 (factory default setting)
5. Press the DELICATES (^) or the COLD (v) keypad to change the current status.
6. Press the START (enter) keypad when the correct status appears in the display. The next option, “PFr”, will appear in the display.

NOTE: To program “PFr” (Power Fail Reset), refer to *option 32*. To program other options, refer to the appropriate section.

How to Exit Programming Feature

Press the WARM (<) keypad until the control returns to Ready Mode.

32. Power Fail Reset “PFr”

This option allows the owner to set the amount of time the control will store active cycle information in the event of a power failure. The default setting for Power Fail Reset is OFF. If Power Fail Reset is turned OFF, the cycle will be saved.

How to Program Power Fail Reset

1. Control must be in Manual Mode. Refer to *Entering the Manual Mode*.
2. Press the DELICATES (^) or the COLD (v) keypad until “Prog” appears in the display. Press the START (enter) keypad and “AtS1” will appear in the display.
3. Press the DELICATES (^) or the COLD (v) keypad to scroll through the programmable options until “PFr” appears in the display.
4. When “PFr” appears in the display, press the START (enter) keypad “oFF” or a number will appear in the display. This number corresponds to the current Power Fail Reset setting.
5. Press the DELICATES (^) or the COLD (v) keypad to increase or decrease the current number to the desired number selected from *Table 9*.
6. Press the START (enter) keypad when the correct number appears in the display. The next option, “lRA”, will appear in the display.

NOTE: To program “lRA” (IR Access [On/Off]), refer to *option 33*. To program other options, refer to the appropriate section.

How to Exit Programming Feature

Press the WARM (<) keypad until the control returns to Ready Mode.

Programming Control

How to Read *Table 9*

Use this table to set the amount of time for Power Fail Reset.

“OFF” turns the option OFF. The current cycle status will be saved. When power is restored, the cycle will begin where it was interrupted.

If 133 is entered, the current cycle will be saved for up to five minutes. If power is not restored within five minutes, the control will erase the cycle status. The minimum power failure time is five minutes. The maximum power fail reset time is 127 minutes.

“PFR”	
DISPLAY TO ENTER IN STEP 6	POWER FAIL RESET TIME
“OFF”*	Turned OFF. Cycle will be saved.
133	5 minutes without power before cycle is lost
. . . add one minute for every number up to	
255	127 minutes without power before cycle is lost

*Factory default setting.

Table 9

33. IR Access (On/Off) “IrA”

This option allows the owner to enable or disable allowing the control to be read by an external device.

How to Program the IR Access (On/Off)

1. Control must be in Manual Mode. Refer to *Entering the Manual Mode*.
2. Press the DELICATES (^) or the COLD (v) keypad until “Prog” appears in the display. Press the START (enter) keypad and “AtS1” will appear in the display.
3. Press the DELICATES (^) or the COLD (v) keypad to scroll through the programmable options until “IrA” appears in the display.
4. When “IrA” appears in the display, press the START (enter) keypad. The current IR Access status will appear in the display.
 “on” = Option Enabled
 (factory default setting)
 “OFF” = Option Disabled
5. Press the DELICATES (^) or the COLD (v) keypad to change the current status.
6. Press the START (enter) keypad when the desired status appears in the display. The next option, “rAEn”, will appear in the display.

NOTE: To program “rAEn” (Manual Rapid Advance [On/Off]), refer to *option 34*. To program other options, refer to the appropriate section.

How to Exit Programming Feature

Press the WARM (<) keypad until the control returns to Ready Mode.

34. Manual Rapid Advance (On/Off) “rAEn”

This option allows the owner to enable or disable the rapid advance feature. Refer to *Rapid Advance Feature* section for more information.

How to Program the Manual Rapid Advance (On/Off)

1. Control must be in Manual Mode. Refer to *Entering the Manual Mode*.
2. Press the DELICATES (^) or the COLD (v) keypad until “Prog” appears in the display. Press the START (enter) keypad and “AtS1” will appear in the display.
3. Press the DELICATES (^) or the COLD (v) keypad to scroll through the programmable options until “rAEn” appears in the display.
4. When “rAEn” appears in the display, press the START (enter) keypad. The current Manual Rapid Advance status will appear in the display.
 “on” = Option Enabled
 (factory default setting)
 “OFF” = Option Disabled
5. Press the DELICATES (^) or the COLD (v) keypad to change the current status.
6. Press the START (enter) keypad when the desired status appears in the display. The next option, “dAEn”, will appear in the display.

NOTE: To program “dAEn” (Manual Diagnostics [On/Off]), refer to *option 35*. To program other options, refer to the appropriate section.

How to Exit Programming Feature

Press the WARM (<) keypad until the control returns to Ready Mode.

Programming Control

35. Manual Diagnostics (On/Off) “dAEn”

This option allows the owner to enable or disable the manual diagnostics option. Refer to *Testing Machine and Electronic Control Functions* section for more information.

How to Program the Manual Diagnostics (On/Off)

1. Control must be in Manual Mode. Refer to *Entering the Manual Mode*.
2. Press the DELICATES (^) or the COLD (v) keypad until “Prog” appears in the display. Press the START (enter) keypad and “AtS1” will appear in the display.
3. Press the DELICATES (^) or the COLD (v) keypad to scroll through the programmable options until “dAEn” appears in the display.
4. When “dAEn” appears in the display, press the START (enter) keypad. The current Manual Diagnostics status will appear in the display.
“on” = Option Enabled
(factory default setting)
“oFF” = Option Disabled
5. Press the DELICATES (^) or the COLD (v) keypad to change the current status.
6. Press the START (enter) keypad when the desired status appears in the display. The next option, “PtEn”, will appear in the display.

NOTE: To program “PtEn” (Production Test Cycle [On/Off]), refer to *option 36*. To program other options, refer to the appropriate section.

How to Exit Programming Feature

Press the WARM (<) keypad until the control returns to Ready Mode.

36. Production Test Cycle (On/Off) “PtEn”

This option allows the owner to enable or disable access to the production test cycle. Refer to *Production Test Cycle* section for more information.

How to Program the Production Test Cycle (On/Off)

1. Control must be in Manual Mode. Refer to *Entering the Manual Mode*.
2. Press the DELICATES (^) or the COLD (v) keypad until “Prog” appears in the display. Press the START (enter) keypad and “AtS1” will appear in the display.
3. Press the DELICATES (^) or the COLD (v) keypad to scroll through the programmable options until “PtEn” appears in the display.
4. When “PtEn” appears in the display, press the START (enter) keypad. The current Production Test Cycle status will appear in the display.
“on” = Option Enabled
(factory default setting)
“oFF” = Option Disabled
5. Press the DELICATES (^) or the COLD (v) keypad to change the current status.
6. Press the START (enter) keypad when the desired status appears in the display. The first option, “AtS1” will appear in the display.

NOTE: To program “AtS1” (Vend Price #1), refer to *option 1*. To program other options, refer to the appropriate section.

How to Exit Programming Feature

Press the WARM (<) keypad until the control returns to Ready Mode.

Collecting Audit Information

This feature allows the owner to retrieve audit information stored in the washer by pressing a sequence of pads on the control. For an explanation of the audit options available, refer to the Audit Options List on this page.

How to Enter Audit Feature

There are two methods the owner can use to enter the Audit Feature.

Entering the Audit Feature by Manual Mode

1. Control must be in Manual Mode to start. Refer to *Entering the Manual Mode*.
2. Press the DELICATES (^) or the COLD (v) keypad until “AUDT” appears.
3. Press the START keypad. “CyC” will appear.

If the procedure did not work, the control will return to the Ready Mode.

Entering the Audit Feature with the Coin Vault Open

1. Open coin vault. The service door must be closed, and have remained closed for 4.25 minutes.
2. Press the START (enter) keypad.

NOTE: If the Audit Feature was entered during an active cycle, the machine will continue to run.

How to Read Audit Data

1. Use the DELICATES (^) or the COLD (v) keypad to scroll through various options until the desired option is shown in the display. Refer to the Audit Options List, *Table 10*, for an explanation of the audit options available.

Audit Options List	
Display	Description
“CyC”	Total # of machine cycles
“COI1”	Total # of coins #1
“COI2”	Total # of coins #2
“PLSE”	Total # of Start Pulses

Table 10

2. Once the desired option appears in the display, press the START (enter) keypad **once** to start the audit count. At this point, the display will show the first four-digit segment of the audit value. If the audit count is 10,000 or higher, press the START (enter) keypad again to view the last four digits of the number.

NOTE: The display can show up to 4 digits at one time. Audit counts 10,000 or higher are separated into two 4-digit segments. Each time the START (enter) keypad is pressed in step 2, the display will show the next four-digit segment in the audit value.

For Example: In the Total Number of Coins #1 option with “COI1” shown in the display, the audit has counted 10,009 coins. Pressing the START (enter) keypad one time will show “_ _ _ 1” to represent ten thousand. Pressing the START (enter) keypad a second time will display “0009” meaning nine. The total equals “00010009” or 10,009.

3. Press the START (enter) keypad again. The control will go to the next audit option in the Audit Options List.
4. To select other audit options, repeat steps 1 – 4.

How to Exit Audit Feature

Press the WARM (<) keypad until the control returns to Ready Mode.

NOTE: To exit Audit Feature when using Coin Vault method, owner must close coin vault. The control will then return to the previous mode of operation.

Manual Reset

This feature allows the owner to reset the washer control's programming data to the factory default settings by pressing a sequence of pads on the control. For an explanation of the Factory Default Settings, refer to *Default Washer Settings*.

How to Enter Manual Reset

1. Control must be in Manual Mode to start.
Refer to *Entering the Manual Mode*.
2. Press the DELICATES (^) or the COLD (v) keypad until "rSEt" appears.
3. Press the START (enter) keypad. The control will be blank until the programming is complete. Once the program has been reset, the control will revert back to the Manual Mode.

Testing Machine and Electronic Control Functions

This feature allows the owner to run diagnostic tests on various washer operations without servicing the washer. The following tests are available:

- Control Software Version Number
- Service Door Opening Test
- Coin Vault Opening Test
- Coin Drop #1 Input Test
- Coin Drop #2 Input Test
- Lid Switch Input Test
- Pressure Switch Input Tests
- Show Fill Time Test
- Show Drain Time Test
- Start Pulse Test
- Configuration Display Test
- Coin Drop Header Present Test

For an overview of the Manual Diagnostics Test Feature, refer to the flowchart on the following page.

How to Enter Testing Feature

1. Control must be in Ready Mode. If it is not, rapid advance through a cycle, refer to **Rapid Advance Feature**, or if coins or a card has been entered, refer to **Clear Vend Feature**.
2. Enter Manual Mode. Refer to **Entering the Manual Mode**.
3. Press the DELICATES (^) or the COLD (v) keypad until “diAg” appears.
4. Press the START (enter) keypad. Display will change to “d001” indicating the control software version number test.
5. Press the DELICATES (^) or the COLD (v) keypad to scroll through the diagnostic test options.

How to Start Tests

To start a diagnostic test, refer to the quick reference chart below (*Table 11*). Press the START (enter) keypad when the desired test number is displayed. For detailed information on each test, read the appropriate description.

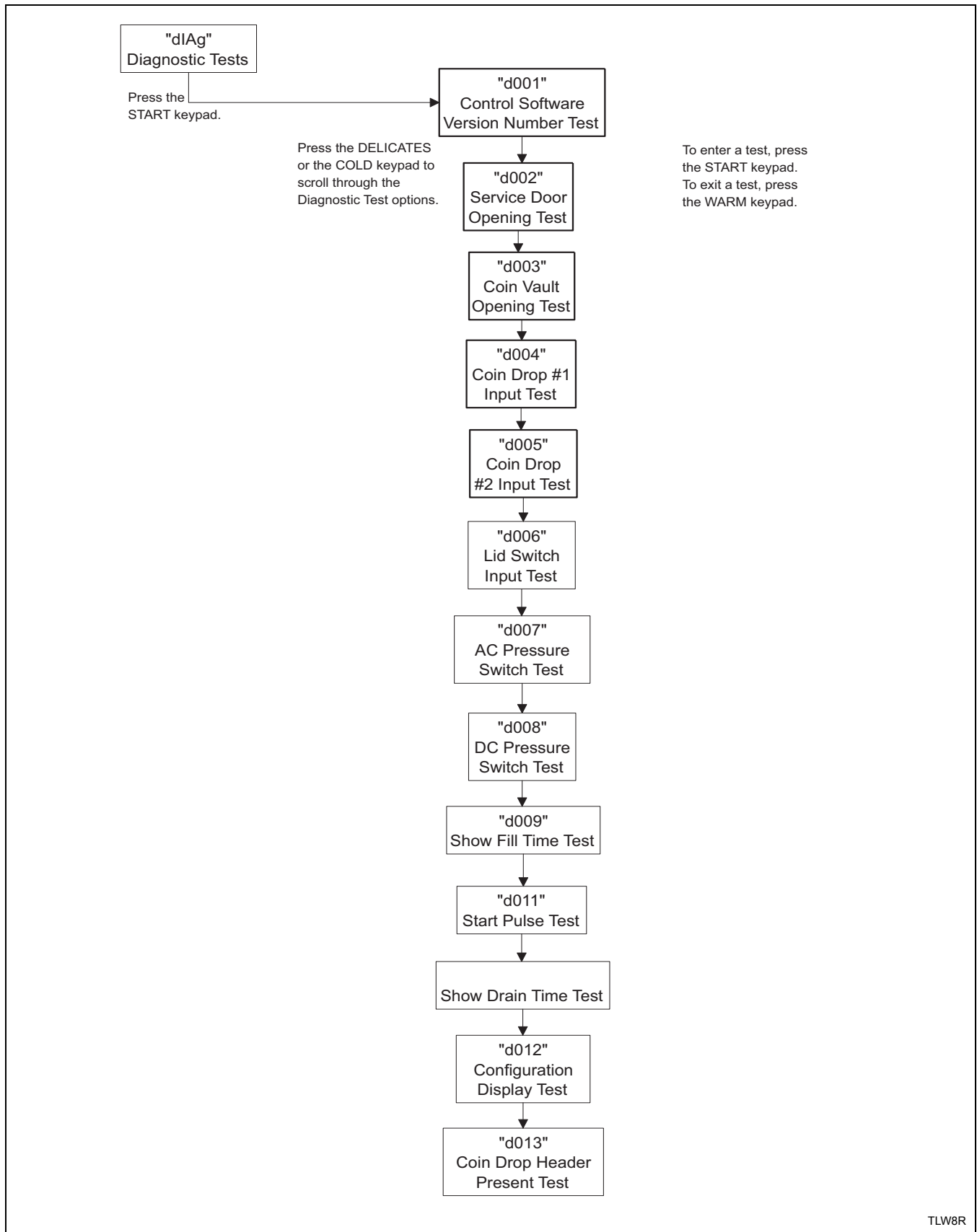
How to Exit Testing Feature

Press the WARM (<) keypad until the display returns to the previous mode of operation.

Diagnostic (Testing) Mode – Quick Reference Chart		
Test Number	Diagnostic Mode	Display
“d001”	Control Software Version # Test	“S XX”
“d002”	Service Door Opening Test	“S XX”
“d003”	Coin Vault Opening Test	“U XX”
“d004”	Coin Drop #1 Input Test	“C1XX”
“d005”	Coin Drop #2 Input Test	“C2XX”
“d006”	Lid Switch Input Test	“L XX”
“d007”	AC Pressure Switch Test	“P XX”
“d008”	DC Pressure Switch Test	“P XX”
“d009”	Show Fill Time Test	“FXXX”
“d010”	Show Drain Time Test	“dXXX”
“d011”	Start Pulse Test	“StXX”
“d012”	Configuration Display Test	“AXXX”
“d013”	Coin Drop Header Present Test	“CHXX”

Table 11

Testing Machine and Electronic Control Functions



TLW8R

Diagnostic Test Descriptions

Control Software Version Number Test

This option displays the control software version number. To start test, control must be in the Testing Mode. Refer to “*How to Enter Testing Feature*” at the beginning of this section.

To enter, press the START (enter) keypad. The display will show “S XX” where “XX” is the software version number.

To exit the Software Version Number Test, press the WARM (<) keypad. The control will return to the testing mode.

Service Door Opening Test

This option tests the service door switch. To start test, control must be in the Testing Mode. Refer to “*How to Enter Testing Feature*” at the beginning of this section.

To enter, press the START (enter) keypad. The display will show “S oP” when the service door switch is open and “S CL” when the service door switch is closed.

The service door switch has to be closed for at least one second and opened for at least a half a second to make a valid count. This test will add counts to the service door opening counter for the audit and save the date/time for each opening of the test.

To exit the Service Door Opening Test, press the WARM (<) keypad. The control will return to the testing mode.

Coin Vault Opening Test

This option tests the coin vault switch. To start test, the control must be in the Testing Mode. Refer to “*How to Enter Testing Feature*” at the beginning of this section.

To enter, press the START (enter) keypad. The display will show “U oP” when the coin vault switch is open and “U CL” when the coin vault switch is closed.

The coin vault switch has to be closed for at least one second and opened for at least a half a second to make a valid count. This test will add counts to the coin vault opening counter for the audit and save the time/date for each opening of the test.

To exit the Coin Vault Opening Test, press the WARM (<) keypad. The control will return to the testing mode.

Coin Drop #1 Input Test

This option tests coin drop #1. To start test, control must be in the Testing Mode. Refer to “*How to Enter Testing Feature*” at the beginning of this section.

To enter, press the START (enter) keypad. The display will show “C1XX”. The “XX” will show the number of coins entered. This test will add counts to the total number of test coins #1 counter.

To exit the Coin Drop #1 Input Test, press the WARM (<) keypad. The control will return to the testing mode.

Coin Drop #2 Input Test

This option tests coin drop #2. To start test, control must be in the Testing Mode. Refer to “*How to Enter Testing Feature*” at the beginning of this section.

To enter, press the START (enter) keypad. The display will show “C2XX”. The “XX” will show the number of coins entered. This test will add counts to the total number of test coins #2 counter.

To exit the Coin Drop #2 Input Test, press the WARM (<) keypad. The control will return to the testing mode.

Lid Switch Input Test

This test will display whether the washer lid is open or closed.

To start test, control must be in the Testing Mode. Refer to “*How to Enter Testing Feature*” at the beginning of this section.

To enter, press the START (enter) keypad. If the lid is closed, the display will show “L CL”. If the lid is open, the display will show “L oP”.

To exit the test, press the WARM (<) keypad. The control will return to the testing mode.

Testing Machine and Electronic Control Functions

Pressure Switch Input Tests

This test will display whether the pressure switch is open or closed. There are two separate pressure switch input tests. The AC pressure switch input test corresponds to the normal fill level. The DC pressure switch input test corresponds to the small load fill level.

To start test, control must be in the Testing Mode. Refer to “*How to Enter Testing Feature*” at the beginning of this section.

To enter, press the START (enter) keypad. The display will show “PAoP” if the AC pressure switch is open or “PdoP” if the DC pressure switch is open and “PAcL” if the AC pressure switch is closed or “PdCL” if the DC pressure switch is closed.

To exit the test, press the WARM (<) keypad. The control will then return to the testing mode.

Show Fill Time Test

This test will display the average fill time in seconds. This average will be calculated by taking the average of the last 10 fill times from the start of the fill until the low level pressure switch opens.

To start test, control must be in the Testing Mode. Refer to “*How to Enter Testing Feature*” at the beginning of this section.

To enter, press the START (enter) keypad. The display will show “FXXX”. The “XXX” will be the average fill time in seconds for that machine.

To exit the Show Fill Time Test, press the WARM (<) keypad. The control will return to the testing mode.

Show Drain Time Test

This test will display the average drain time in seconds. The average drain time is calculated by taking the average of the last 10 drain times.

To start the test, press the START (enter) keypad. The display will show “dXXX”. The “XXX” will be the average drain time in seconds for that machine.

To exit the Show Drain Time Test, press the WARM (<) keypad. The control will return to the testing mode.

Start Pulse Test

This option tests the Start Pulse. To start test, control must be in the Testing Mode. Refer to “*How to Enter Testing Feature*” at the beginning of this section.

To enter, press the START (enter) keypad. The display will show “StXX”. The “XX” will show the number of pulses entered. This test will add counts to the total number of Start Pulses counter.

To exit the Start Pulse Test, press the WARM (<) keypad. The control will return to the testing mode.

Configuration Display Test

This option shows the machine configuration values. To start test, control must be in the Testing Mode. Refer to “*How to Enter Testing Feature*” at the beginning of this section.

To enter, press the START (enter) keypad. The display will show “AXXX”. “XXX” is a number corresponding to whether or not coin drops are connected, or serial card reader or network board are connected.

Refer to *Table 12* for test information.

To exit Configuration Display Test, press the WARM (<) keypad. The control will return to the testing mode.

Coin Drop Header Present Test

This option tests the coin drop header connection. To start test, control must be in Testing Mode. Refer to “*How to Enter Testing Feature*” at the beginning of this section.

To enter, press the START (enter) keypad. The display will show “CHoP” when the wiring connection is open and “CHCL” when the connection is closed.

To exit the Coin Drop Header Present Test, press the WARM (<) keypad. The control will return to the testing mode.

Machine Configuration Table

CONFIG VALUE	NETWORK BOARD PRESENT	CARD READER PRESENT	COIN DROP #2 PRESENT	COIN DROP #1 PRESENT
16	OFF	OFF	OFF	OFF
17	OFF	OFF	OFF	ON
18	OFF	OFF	ON	OFF
19	OFF	OFF	ON	ON
20	OFF	ON	OFF	OFF
21	OFF	ON	OFF	ON
22	OFF	ON	ON	OFF
23	OFF	ON	ON	ON
24	ON	OFF	OFF	OFF
25	ON	OFF	OFF	ON
26	ON	OFF	ON	OFF
27	ON	OFF	ON	ON
28	ON	ON	OFF	OFF
29	ON	ON	OFF	ON
30	ON	ON	ON	OFF
31	ON	ON	ON	ON

Table 12

Production Test Cycle

To Enter Production Test Cycle

1. Be certain control is in Ready Mode, washer lid is closed, and access panel or coin vault is open.
2. While pressing and holding the HOT keypad with one hand, press the DELICATES keypad with the other hand.
3. When the control enters the Production Test Cycle, it will first display “S XX” with the “XX” showing the software version of the control.
4. The control will advance through the sequence of test steps whenever START (enter) is pressed, with the exception of the Keypad Test and Step #4 Test. Refer to *Table 13* for all tests in the Production Test Cycle.

To Exit Production Test Cycle

The test will be exited when the START (enter) keypad is pressed in Step #10. The control will return to Ready Mode. Otherwise, the control must be powered down to end the test.

Testing Machine and Electronic Control Functions

Production Test Cycle Quick Reference Table		
Display	Test Mode	Comments
S XX	Software Version	XX is the software version number.
CtXX	Control Type	XX is the control type.
PAdX	Keypad Test	When a key is pressed, the control will display the number assigned to the keypad (1 – NORMAL, 2 – PERM PRESS, 3 – DELICATES, 4 – SOIL LEVEL, 5 – HOT, 6 – WARM, 7 – COLD, 8 – START). As each keypad is pressed, its corresponding LED will be lit and remain on for the duration of the test. When all keypads have been pressed, the control will advance to Coin Drop Test step.
CXCX	Coin Drop Test	X is the number of coins entered. If dual coin drops are installed, coin drop #1 will be shown on the left of the display and coin drop #2 will be shown on the right of the display. If a single coin drop is used, only one coin count will be displayed and the other side will remain at zero.
S XX	Service Door Switch Test	XX is either oP to signify service door switch is open or CL to signify service door switch is closed.
U XX	Coin Vault Switch Test	XX is either oP to signify coin vault switch is open or CL to signify coin vault switch is closed.
All LEDs and display segments will light	Show Entire Display Mode	The audio signal is turned on.
0001	Step #1 Test	SPIN LED is lit and control energizes the high speed spin motor outputs.
0002	Step #2 Test	Motor outputs are off and hot water valve is on.
0003	Step #3 Test	Motor outputs are off and cold water valve is on.
0004	Step #4 Test	Motor outputs are off and hot and cold water valves are on. Control will remain in this mode until machine fills and pressure switch opens. If the small and normal pressure switches don't open in the proper order, a pressure switch error will occur, the water valves will turn off and the display will show "PS" until the machine is powered down. All keypad presses are ignored until step is complete.
0005	Step #5 Test	RINSE LED is lit and control energizes the high speed agitate motor outputs.
0006	Step #6 Test	RINSE LED is lit and control energizes low speed agitate motor outputs.
0007	Step #7 Test	SPIN LED is lit and control energizes low speed spin motor outputs.
0008	Step #8 Test	SPIN LED is lit and control energizes high speed spin motor outputs.
0009	Step #9 Test	LEDs are off, motor outputs are off, and hot and cold water valves are on.
0010	Step #10 Test	SPIN LED is lit and control energizes high speed spin motor outputs.

Table 13

Error Codes

Following is a list of possible error codes for an electronic control. Errors beginning with “EI” refer to external device Infra-red communication errors. Errors beginning with “EC” refer to card reader errors. All other errors refer to machine errors.

Display	Description	Cause/ Corrective Action
EI01	Transmission Failure	Communication failure. Re-aim external device and try again.
EI02	Device Time-out	Communication failure. Re-aim external device and try again.
EI03	Invalid Command Code	Incorrect machine type. Before downloading, ensure data is for current machine type.
EI04	Expecting Upload Request	Communication failure. Re-aim external device and try again.
EI05	Invalid or Out-of-Range Data	Incorrect machine type. Before downloading, ensure data is for current machine type.
EI09	CRC-16 Error	Communication failure. Re-aim external device and try again.
EI0A	Invalid Machine Type	Incorrect machine type. Before downloading, ensure data is for current machine type.
EI0C	Time-out Exceeded	Communication error. Re-aim external device and try again.
EI0E	Encryption Error	Incorrect machine type. Before downloading, ensure data is for current machine type.
EI0F	Invalid Wake-up or Infra-red Disabled	Communication failure or infra-red is disabled. Manually enable infra-red on control or re-aim external device and try again.
EC02	Time-out Error	Communication failure. Try card again.
EC03	Invalid Command Code	Incorrect machine type. Before downloading, ensure data is for current machine type.
EC05	Invalid or Out-of-Range Data	Incorrect machine type. Before downloading, ensure data is for current machine type.
EC11	No Card Reader Initialization	Communication is valid, but there is no card reader initialization. Power down, power up and try again.
EC18	No Communication	Card reader initialized, communication lost. Power down, power up and try again. If error persists, replace control or card reader.
EC19	No Card Reader Communication	Communication failure. Power down, power up and try again. If error persists, replace control or card reader.

Table 14 (continued)

Table 14 (continued)

Display	Description	Cause/ Corrective Action
Right most decimal point Lit	Network Communication Error	Communication problem. Wait for 1.5 minutes for error to clear. If error doesn't clear, power-down and power-up the machine. If error persists, replace control or network board.
ALrn	Break-in Alarm Error	Service the door or coin vault switches.
oFF	Break-in Alarm Shutdown Error	Service the door or coin vault switches.
EFL	Fill Error	Pressure switch fails to open in 30 minutes (or other programmed length of time) in any fill agitate cycle.
Edr	Drain Error	Water sensed at end of wash spin step or final spin step.
Err	Coin Error	Invalid coin pulse or inoperative coin sensor. Check coin drop area and remove obstructions. If error persists, tampering may have occurred. Evaluate security procedures.

Table 14

Rapid Advance Feature

The Rapid Advance feature allows the owner to quickly advance through active cycles or advance into a cycle from the ready mode.

How to Enter Rapid Advance from Ready Mode

1. If control is in Ready Mode, control must be put into Manual Mode. Refer to *Entering the Manual Mode*.

NOTE: For card reader models, remove the control panel and unplug the bullet connector located between the “white/black” and “red/blue” wires.

2. Press the DELICATES (^) or the COLD (v) keypad until “rAPd” appears in the display.
3. Press the START (enter) keypad. The display will show “PUSH” then “Strt” followed by the cycle time.
4. Press the START (enter) keypad to start cycle.

How to Enter Rapid Advance During an Active Cycle

1. Be certain service door is open.
2. While pressing and holding the NORMAL keypad with one hand, press the HOT keypad with the other hand. “rAPd” appears in the display.
3. Press the START (enter) keypad to advance the cycle.

Control may be in an active cycle or in the ready mode to use the Rapid Advance feature.

While in the Rapid Advance Mode, pressing the START (enter) keypad will advance the washer to the next cycle step. The cycle indicator lights will tell which cycle step the washer is in.

For Example: If the washer is in the wash fill/agitate cycle step, pressing the START (enter) keypad will advance the washer into the *WASH PAUSE* cycle step.

Continue pressing the START (enter) keypad until the cycle is completed.

How to Exit Rapid Advance Feature

NOTE: For card reader models, be sure to reconnect the bullet connector between the “white/black” and “red/blue” wires.

1. Advance through the cycles until reaching the ready mode.

NOTE: The Manual Rapid Advance option must be turned on for Rapid Advance to work. Refer to option 34 in *Programming Control*.

Clear Vend Feature

The Clear Vend feature allows the owner to clear a control which is in the middle of satisfying a vend price, and set it back to the ready mode.

How to Clear Vend

1. Open the service door. Refer to *Opening the Service Door*. The coin vault must remain closed.
2. While pressing and holding the PERM PRESS keypad with one hand, press the HOT keypad with the other hand. The control will reset to the ready mode.

Power Fail Recovery

The Power Fail Recovery feature allows the cycle status to be saved in memory in the event of a power failure.

If a cycle is in progress when the power fails, the cycle status is saved in memory. When power recovers, the control will determine whether to automatically continue the cycle from the point it left off, requiring the user to press the START pad to continue the cycle, or end the cycle and put the control into the Ready Mode. To program this feature, refer to *Programming Control*.

Power Fail Reset Disabled

If the Power Fail feature is disabled, the control will automatically resume the cycle from the point it left off.

Power Fail Reset Enabled

If the length of the power failure is less than the programmed Power Failure Reset time, the control will resume the cycle from the point it left off. The cycle will resume automatically.

If the power failure lasted more than the programmed power failure reset time, the control will end the cycle and will return to the Ready Mode. If, however, the tub is filled with water when the power recovers, the control will not go directly to Ready Mode, but will spin out the water first. In this case the control will enter the Start Mode at the Rinse Spin #1 step of the DELICATE Cycle prompting the user to press the START pad. Once the START pad is pressed, the control will start the Rinse Spin #1 step, then the Final Spin step and then end the cycle.

Communications Mode

Infra-red Communications

The Infra-red Communications feature allows the washer control to communicate with an external device. The washer control can be programmed and have its data read without using the keypad. It may also be used to start and stop various diagnostic tests.

How to Begin Communications with An External Device

The control will go blank and the display will show “-C-” until the communication is complete. The display will return to the previous mode. If an error occurs that terminates communication, the display will show “E1XX” (“XX” represents the error code).

NOTE: The Infra-red Communications option must be turned on. Refer to *option 33* in *Programming Control*.

Card Reader Communications (Card Models Only)

The Card Reader Communications feature allows the washer control to communicate with the card reader. The washer control can be programmed and have its data read without using the keypad.

Network Communications

The Network Communications feature allows the washer control to communicate with a network. The washer control can be programmed and have its data read without using the keypad.

Default Cycle Time

The cycle listed is the default PERM PRESS cycle programmed in at the factory. This cycle can be made longer or shorter by reprogramming the agitate or final spin times. Refer to **Programming Control** section to change these times. All other times are not programmable.

Cycle	Default
Wash Fill	4:00
Wash Agitate	10:00*
Wash Pause	0:10
Wash Spin #1	3:00
Wash Spin/Spray	0:30
Wash Spin #2	0:45
Extra Rinse Fill	0:00
Extra Rinse Agitate	0:00*
Extra Rinse Pause	0:00
Extra Rinse Spin #1	0:00
Rinse Spin/Spray #1	1:52
Rinse Spin	1:50
Rinse Spin/Spray #2	4:00
Final Spin	6:00*

* = Programmable Times